

# Operating Instructions for *HFTA*, Version 1.04

(HF Terrain Assessment for Windows)

February 22, 2013

This version of the *HFTA* Operating Instructions updates the method to download terrain data files from the NED (National Elevation Database) USGS online servers. The *MicroDEM* program then can be used to create terrain profiles for *HFTA*, using USGS map data in DEM (Digital Elevation Model) or NED (National Elevation Database) seamless formats in the USA. In addition, usage of SRTM (Shuttle Radar Topography Mission) 3-arc-second format is described, allowing the user to generate terrain profiles for areas outside the USA. See **Appendix A** for instructions on downloading and using digital terrain data.

## PREFACE

*HFTA* is a ray-tracing program designed to evaluate the effect of foreground terrain on the elevation pattern of up to four multi-element HF monoband Yagis in a stack. See Chapter 3 in the 21st Edition of *The ARRL Antenna Book* for details about the theory behind ray tracing and diffraction in *HFTA*.

*HFTA* has a vastly improved operator interface compared to older DOS versions of its predecessor programs, *YT* and *YTAD*. The program has been under continuous development since 1995. *HFTA* best models horizontally polarized Yagis, although a simple horizontal dipole model has been added as well. *HFTA* takes into account the effects of Fresnel horizontal ground-reflection coefficients, meaning that the ground conductivity and ground dielectric constant are inputs to the program through the Options subscreen. (You will find that these ground coefficients have only a minor effect on the elevation pattern at low angles, gradually becoming more significant at higher elevation angles.) Besides reflection, *HFTA* also takes into account diffraction. Please note: *HFTA* does not work with vertical polarization, only horizontal, and it works best with directive arrays such as horizontally polarized Yagis or quads.

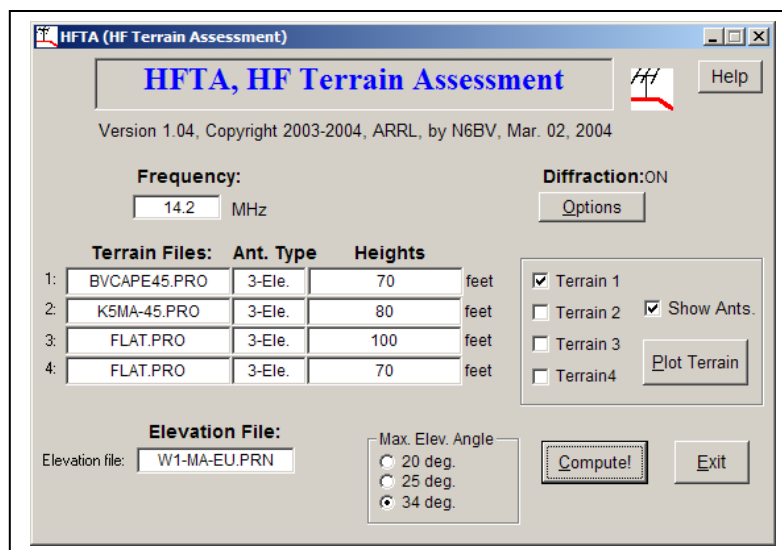


Fig 1 — *HFTA* main screen.

*HFTA*'s output response is referenced to an isotropic radiator in free space; that is, in dBi. The free-space gain assumed for the default four-element Yagi model is 8.5 dBi. **Fig 1** shows *HFTA*'s main window. We'll get into details about operating *HFTA* later, but first we need to look at the terrain data files you will need for your particular location.

## Instructions for Running *HFTA*

Start up *HFTA* by clicking on its icon. Look again at Fig 1, which shows a typical main window for *HFTA*. Like its stable mates *TLW* and *YW*, *HFTA* incorporates a number of "Tool Tips." When you move the mouse cursor and let it hover over a button or a text box on the screen, a brief explanatory note will appear.

You can select up to four different terrain files, each with a set of heights for stacked antennas and *HFTA* will overlay the resulting elevation patterns on a single high-resolution graph. I regularly compare any patterns I generate to a reference 3-element Yagi over flat ground, usually at a height of 60 feet on 21 or 28 MHz, or 100 feet for 14 or 7 MHz. (These are also the reference antenna heights I specify when using the *IONCAP* or *VOACAP* propagation-prediction programs.)

*HFTA* saves the defaults you like to a startup file called YTW.DEF. If *HFTA* detects no YTW.DEF file on bootup, it will automatically create a new one, showing blanks for the four terrain files.

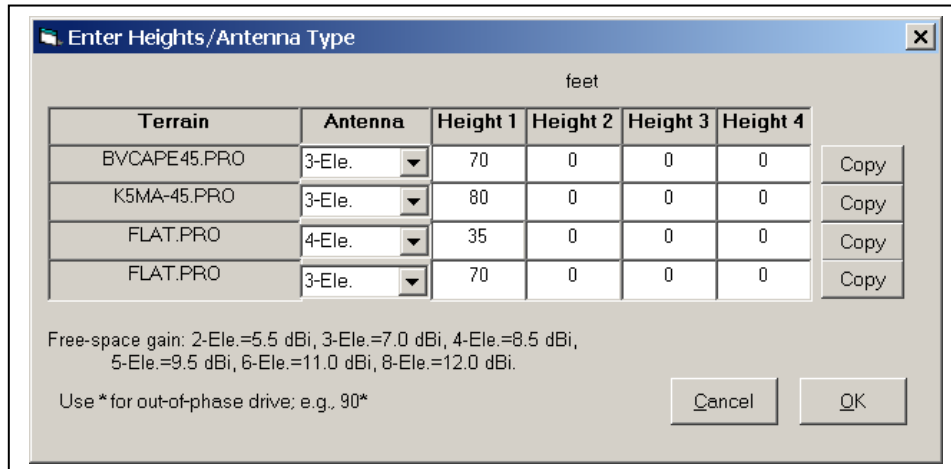
### SELECTING A TERRAIN FILE

To select a **Terrain File**, click the left-mouse button with the mouse cursor in the appropriate text box. A dialog box will open up asking you to "select existing terrain file" from a sorted list of filenames. As usual in this familiar common-dialog style, you may change the subdirectory if you have saved terrain filenames in other than the default subdirectory.

Keep in mind that you *must* have a terrain filename showing in the first position in *HFTA*, with blanks in other positions if you like. Some operators like to keep FLAT.PRO in terrain filename 4 so they always have a reference flat terrain with which to compare the responses over actual terrains. Click on the **Cancel** button to erase a filename in that **Terrain Files** box.

### ANTENNA HEIGHTS

Once you've selected a terrain profile name, you will want to choose the type of antenna and the number and heights of antennas in a stack. Click on the **Ant. Type** or **Heights** box you want. A new dialog box will open. See **Fig 2**. The default when you first start *HFTA* is one 4-Ele. Yagi antenna, at 100 feet in height. Let's say that you want to specify three 4-Ele. Yagi antennas in a stack at 90, 60 and 30 feet. You would place the cursor in the top left text box and edit the **100** to be **90**. Then you would edit the second box to be **60** and the third to be **30**. You can move the mouse or use the Tab key to advance the cursor from box to box. Once you click on **OK**, you might want to set the same heights for the next **Terrain Files** box. The **Copy** buttons on the right side of the **Height 4** boxes give you a quick way of copying one row to another row. Click on the **Copy** button you want and you will see the other two **Copy** buttons change their labels to "To". Click on the **To** button you want. By the way, always specify a height for each Terrain — 0 feet won't work right.



**Fig 2—Entering antenna types and heights for each terrain file.**

### SELECTING THE TYPE OF YAGI USED

Clicking on the button at the right down arrow in an **Antenna** box will open a drop-down menu of antenna types available, including a dipole, and Yagis with as few as 2 elements all the way to 8 elements. The gains in free space for these antennas are shown below in **Table 1**, along with the boom lengths needed on 20 meters to achieve these gains.

**Table 1**  
**Free-Space Gain (dBi) and Boomlengths on 20 Meters**

Antenna	Dipole	2-Element	3-Element	4-Element	5-Element	6-Element	8-Element
Gain	2.15	5.5	7.0	8.5	9.5	11.0	12.0
20-m Boom	—	8'	16'	26'	40'	60'	80'

### OUT-OF-PHASE FEED

There is a useful feature in *HFTA* that earlier versions (such as *YT*) didn't have. You may choose to use out-of-phase drive to individual antennas in a stack. You do this by appending an asterisk (\*) to the end of a height number. For example, in a stack at 90, 60 and 30 feet, you might run the top 90-foot high antenna out-of-phase with the two lower Yagis. Enter **90\*** in the top left text box. Although employing out-of-phase drive is not often useful in terms of increasing the overall performance of a stack of Yagis, sometimes it can cover high angles that a stack or any single antenna cannot accomplish because of a steep mountainous terrain.

### A CAVEAT ABOUT CLOSELY SPACED YAGIS IN A STACK

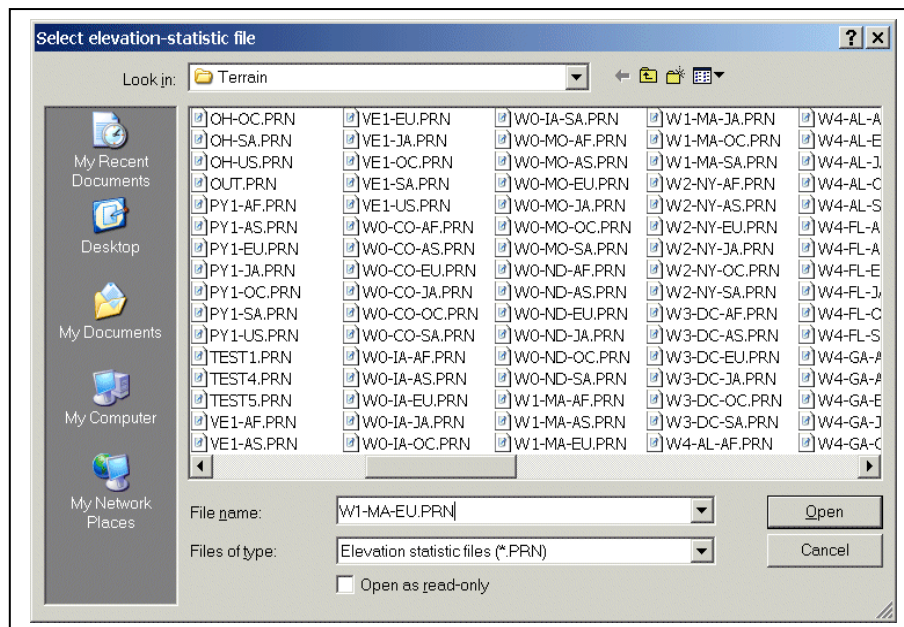
The internal Yagi model in *HFTA* is a very simple mathematical model. It does not compute interactions between individual Yagis in a stack — *HFTA* assumes that each antenna is a “point source.” For antennas stacked more than about a half wavelength apart this is not a problem. For example, you should be cautious specifying spacings less than about 20 feet on 20 meters (and proportionately scaled on other bands) because of mutual-coupling effects between real antennas.

Spacings less about 20 feet on 20 meters will show a false increased gain in *HFTA*, even though the real effects of interaction between the beams will actually be to decrease the gain.

### SELECTING AN ELEVATION-STATISTICS FILE

Click in the box labeled **Elevation File** to select the nearest elevation-statistics file for your targeted receiving area. See **Fig 3**. For example, from New England to Europe, choose W1-MA-EU.PRN, standing for W1 (Massachusetts, the Boston area) to all of Europe. For each amateur HF band from 80 to 10 meters, this file shows the percentage of time each elevation angle is effective. These statistics were computed for all the times over the 11-year solar cycle when each band is actually open. (If you run this example, you will find that the peak percentage for the 20-meter band is 12.7%, occurring at an elevation angle of 5° from Boston to all of Europe.)

Each elevation-angle statistic file is named in the generic format \*.PRN and comes from the CD-ROM shipped with the 19th through 21st editions of *The ARRL Antenna Book* (located in the default *HFTA* subdirectory). The *Antenna Book*'s disk contains files for all regions of the USA to Europe (EU), the Far East (JA), South America (SA), South Asia (AS), Southern Africa (AF), and the South Pacific (OC), plus data files for a wide variety of other transmitting sites throughout the world. You choose the general area where your transmitter is located during initial installation of the *HFTA* program. Use the installation program for areas other than the ones you've already installed. By the way, don't try to select OUT.PRN as a statistical date file. It won't work.



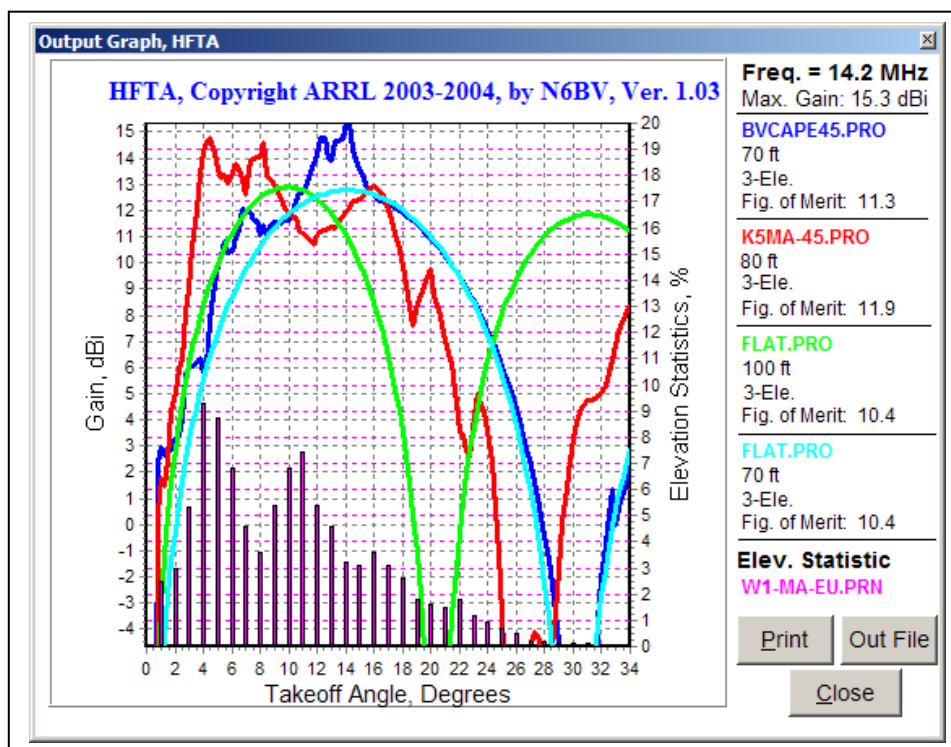
**Fig 3 — Selecting Elevation-Statistical Files**

### CHANGING THE FREQUENCY

You can edit the frequency by clicking in the **Frequency** box on the main *HFTA* window. The elevation-angle statistical data is automatically updated when you enter a different frequency.

## HFTA RESULTS

**Fig 4** shows plots for four terrains after clicking **Compute!** BVCAPE-45.PRO is for my old QTH on Cape Cod. K5MA-45.PRO is the profile of my next-door neighbor, K5MA on Cape Cod. Both terrain profiles are for the 45° azimuth towards Europe. Terrain Files 3 and 4, FLAT.PRO, are over flat ground, with antennas at 70 and 100 feet respectively. These serve as references to show what happens in the absence of irregular terrain. The antenna heights shown in Fig 4 were those of our actual 20-meter Yagis. N6BV's was at 70 feet, while K5MA's was at 80 feet.



**Fig 4 — Comparing responses for K5MA and N6BV on Cape Cod.**

Plotted on the same graph in Fig 4 as the line-graph elevation responses is a bar chart showing the statistical elevation-angle percentages versus elevation angle. These percentages are valid for all the times the 14-MHz band is open from New England to Europe. The degree to which the antennas chosen for a particular terrain cover *all these angles*, the more effective will be those antennas/terrain for all periods of the solar cycle. The ideal coverage would be a high-gain, rectangular-shaped elevation response from 1° to 28°, the full range of elevation angles covered on this band to Europe.

In Fig 4 you can see that K5MA had an advantage of as much as about 5 dB into Europe for angles less than about 10°, but that my station next door had a slight advantage for slightly higher takeoff angles. Still, the N6BV terrain and 70-foot high antenna performed as well, or even better than, a station with a 70-foot high Yagi located over flat ground, the fourth (cyan) curve. Both antennas were physically located 260 feet apart (we had a 260-foot long dipole between our two towers) and into Europe there was rarely much of a difference in reported signal strengths, especially given the nature of fast fading on an HF path.

You can enlarge a portion of any *HFTA* graph using the mouse. For example, you might want to expand the area from 2° to 15°, where most of the action is occurring in Fig 4. Move the mouse cursor to the upper left side of the portion you want to enlarge and hold down the left-mouse button. While holding down the left-button, drag the cursor to the lower right and release the left-button. The graph will instantly blow up to show details in this region.

To return to the original graph, reverse the process—at the lower-right side of the graph, hold down the left-button on the mouse and drag it upwards to the left. When you release the left-button the graph will return to its original area. Holding down the right-button on the mouse allows you to scroll up and down on the graph. You can also choose to expand or contract the X-axis for the graph by clicking on the appropriate **Max. Elev. Angle** option box on *HFTA*'s main window. The default is 0° to 34°. You may also choose to change the size of the graph by dragging a corner or by clicking on the **Maximize** icon at the upper right.

If you want to read the exact value at some point on one of the curves, move the mouse cursor to that point and a “Tool Tip” will appear, giving the angle, separated by the computed value at that point. For example, moving the cursor to the top of the 4° bar-graph line in Fig 4 will show “4 9.3”, meaning that at a 4° elevation angle the statistical percentage is 9.3% from New England to Europe on 20 meters.

## FIGURES OF MERIT

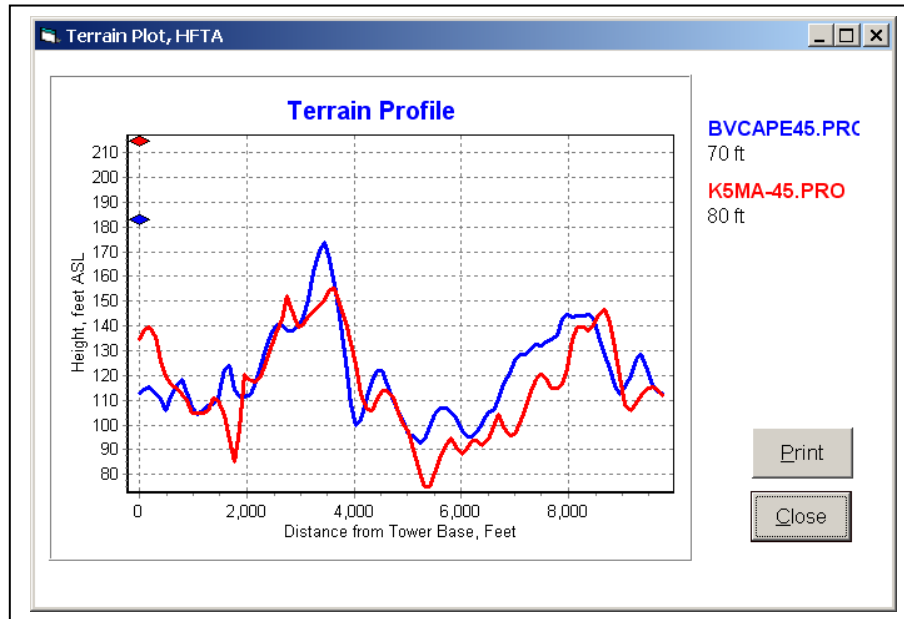
In Fig 4 you'll see listed at the right-hand side a “Fig. of Merit” for each curve. This is a weighted statistical average computed by multiplying the gain at each angle by the statistical percentage that the band is open at that angle. The products for all the angles are averaged to compute the Figure of Merit, which is calibrated in dBi.

For example, the flatland curve at 70 feet in Fig 4 has a Figure of Merit of 11.3 dBi, while the curve for K5MA has a Figure of Merit of 11.9 dBi. This means that on average K5MA's signal will be  $11.9 - 11.3 = 0.6$  dB stronger than a flat-land station at 70 feet using the same Yagis.

I should caution you that a Figure of Merit (FOM) is only a “snapshot” of a complex situation. You can easily find situations where the elevation response of an antenna over complex terrain is better at low elevation angles than another antenna that has a higher FOM over the entire range of possible elevation angles. Low angles are especially important during periods of low solar activity, when the only possible modes of propagation are low-angle modes.

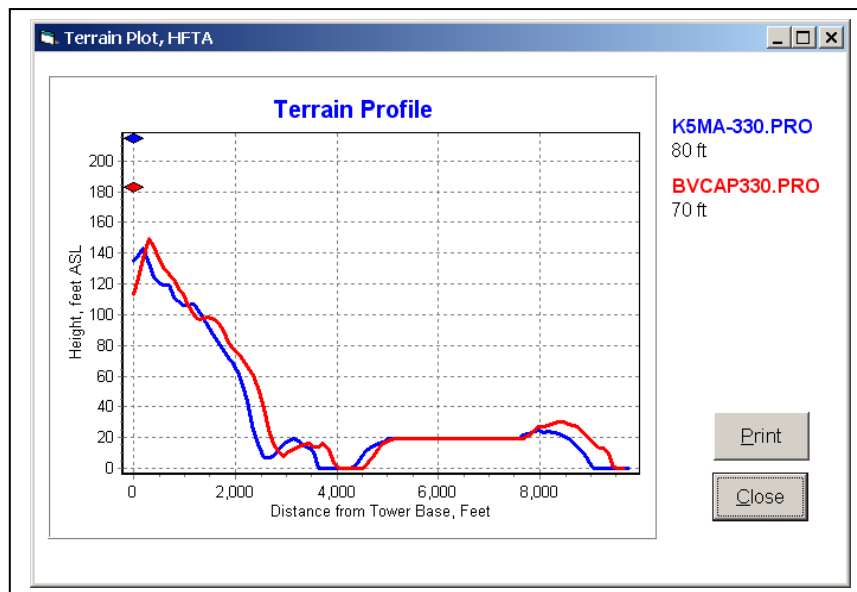
## PLOTTING THE TERRAIN PROFILE

Clicking the **Plot Terrain** button with both K5MA-45.PRO and BVCAP45.PRO terrain files selected yields the graph shown in **Fig 5**. K5MA's tower was located behind his house on a rise about 22 feet higher than my tower's base. So his 80-foot high antenna was effectively 32 feet higher than mine. This tended to give him an advantage at lower elevation angles, as might be expected. In addition, there was a small peak almost equal in height to the N6BV antenna (the red squashed diamond on the left-edge of the Y-axis). This peak tends to limit somewhat the elevation response. Note that the Y-axis (maximum and minimum height) values on-screen are chosen automatically in *HFTA*. Be careful when making assumptions about the steepness of a terrain!



**Fig 5 — Terrain profile for K5MA and N6BV towards Europe from Cape Cod. The squashed blue and red diamonds near the Y-axis show the antenna heights.**

My terrain into Japan was another story. **Fig 6** shows the terrain profile towards 330°, the azimuth to Japan. About 300 feet away from the N6BV antenna was a small hill with a large water tank on it.



**Fig 6 — Terrain profile of K5MA and N6BV toward Japan.**

Indeed, this difference was borne out consistently when we compared signals to Japan. See **Fig 7**. Since we couldn't co-exist operating the same DX contest because of our proximity to each other, Jan and I would alternate contests: He would operate one weekend, and I would operate the



next contest weekend. We ran a coax between our houses so that we could use each other's antennas. Even with an extra 400 feet of coax between the antennas, K5MA's antenna/terrain was always superior to my shot into Japan!

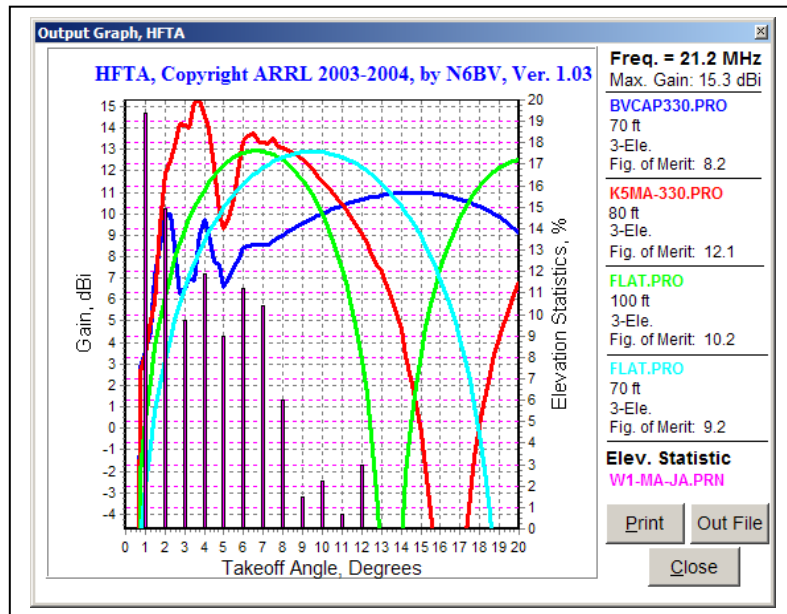


Fig 7 — Graph for K5MA and N6BV towards Japan from Cape Cod on 21.2 MHz.

### DIFFERENT TYPES OF YAGIS

As mentioned earlier, you can select the type of antenna that *HFTA* uses for individual terrain profiles. **Fig 8** shows how different types of antennas affect the far-field elevation response at the N6BV station in Windham, NH, in the direction of Europe for four different stacked antennas at 90/60/30 feet: a dipole, a 2-element Yagi, a 3-element Yagi and a 6-element Yagi.

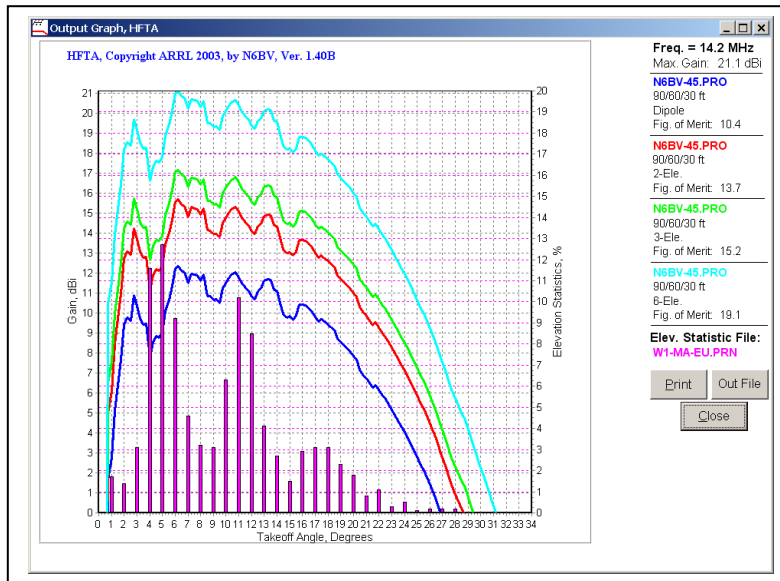


Fig 8 — Response for 90/60/30' stacks of different types of antennas.



## Options in *HFTA*

From *HFTA*'s main window, you can click on the **Options** button to bring up the **Options, HFTA** form. Clicking **OFF** in the **Diffraction** box toggles the diffraction mechanism on and off, to illustrate the effects of diffraction. When diffraction is off you will find that only a reflection-analysis is run. In general, diffractions “fills in the holes” and “knocks down the peaks” in an elevation pattern. This “fuzzing up” of the computed response is what happens in the real world, where things are rarely very peaky or full of deep holes.

The drop-down box for **Soil Conductivity (mS/m)/Dielectric** allows you to choose the conductivity and dielectric constant of the ground in the foreground of the antenna. A conductivity of 5 mS/m and a dielectric constant of 13, typical of average to better-than-average ground, is the default. You will find that changing the ground constants for a horizontally polarized antenna like those used in *HFTA* changes the elevation pattern only a small amount, and only that at very high elevation angles.

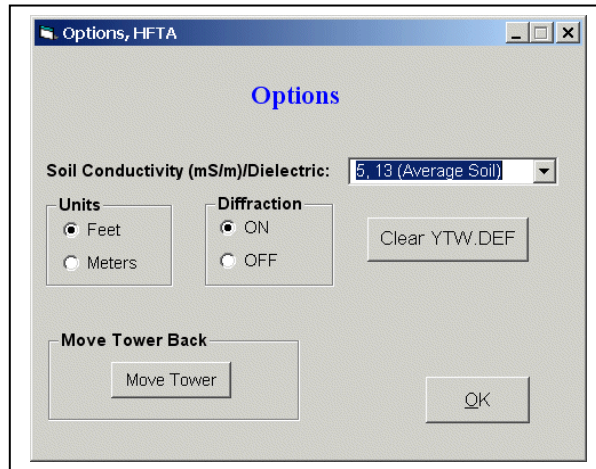
On this page you may select whether to display distances and elevations in feet or meters. *HFTA* saves your choice of feet or meters in a definition file called YTW.DEF file so that you don't have to remember the next time it boots up. Along with the type of antenna mentioned above, YTW.DEF also stores your preferred window sizes and locations for the elevation-response and terrain-plot graphs.

If *HFTA* should crash somehow, you might end up with a corrupted YTW.DEF file. You should navigate to the default *HFTA* subdirectory (usually located in the c:\AntBk20\HFTA subdirectory if you did a standard installation) using *Windows Explorer* and delete the YTW.DEF file there, or you can erase the YTW.DEF file using the **Clear YTW.DEF** button on the **Options** page.

### MOVING THE TOWER BACK

Several years ago, Zack, W1VT, a prominent VHF/UHF expeditioner who is fond of operating from high mountain-top locations, told me he was concerned that his 6-meter antennas might be too close to the edge of various drop offs to receive the benefit of ground reflections. On the **Options** page of *HFTA* I have therefore added a function to evaluate the effect of moving the base of a tower backward from the “zero” position stored in Terrain File 1. This “Move Tower” function is most useful conceptually when the tower is placed at the edge of a steep drop off, but you can also use it to move a terrain feature, such as a tall mountain peak, farther away from the tower to see how the elevation response is affected.

See **Fig 9**. In the **Options** window, click on **Move Tower**. This will open a new window that allows you to specify the distance to move back from the original tower position, either in feet or meters. This will move the base back the specified distance, keeping the elevation the same as the original tower elevation. In effect, this moves the tower back onto flat land, in the direction directly behind the azimuth of interest. This is a common situation at the crest of a hill, where the land is typically flat so that a house can be situated there.



**Fig 9 — The Options window, showing the Move Tower button.**

Once you specify a move distance, *HFTA* requires you to save the modified terrain profile to a new filename. The program suggests a filename, which you may override if you like. For example, if the filename in Terrain File 1 is called “N6BV-045.00.PRO,” *HFTA* will suggest a new filename of “N6BV-045.00-1.PRO.” Whatever filename you choose will automatically be inserted in Terrain File 2 and the height(s) of the antenna(s) used for Terrain File 1 will be duplicated for Terrain File 2. This allows you to compare the results for the original and modified terrains directly when you click **Compute!** in the main window.

So, can you actually be too close to the edge of a cliff, at least as far as antenna performance is concerned? If low elevation angles are needed, moving back on a level plain away from the edge of a cliff will probably adversely affect your signals. Try it yourself in *HFTA*.

### ***HFTA* OUTPUT**

The on-screen graphs in Fig 7 or Fig 8 show the elevation response (calibrated in dBi) from 1° to 34° degrees above the horizon, in ¼° increments. *HFTA* also writes this data in steps of 1° to a disk file called OUT.PRN, which is used by the DOS utility program *MAKEVOA.EXE* to create a custom antenna file for *VOACAP*, the sophisticated propagation-prediction program. (Note: the *MAKEVOA.EXE* program will only create a *VOACAP* antenna file for the first set of data in OUT.PRN.)

You may open the OUT.PRN file from the graph window by clicking on the **Out File** button. This will open the file, using Notepad (or whatever program you may have associated in *Windows* with \*.PRN files). You may save the file to another file name if you wish to later use it in, say, a spreadsheet for your own graphing and analysis. Note that a new OUT.PRN is created each time you boot up *HFTA*.

OUT.PRN’s elevation data is delimited with commas. Character labels are delimited with double quotation marks. This sort of data can be imported easily into a spreadsheet or database management software for other types of manipulation, if you like.

If you want to print the on-screen graphs click the **Print** button. The red trace will be printed with a dotted line to help differentiate it on a black/white printer. The cyan trace will be printed with a thinner line width to help differentiate it from the other traces. Note that if you try to print a full-screen graphic, parts of it may be cut off towards the edges of the print. Resize the graphic to print it fully on your particular printer.

You could also press the [**Print Screen**] key to put a copy of the graph onto the Windows Clipboard. This can then be used by another *Windows* program, such as *Word for Windows* or *Paint Shop Pro*. I find *Paint Shop Pro* to be particularly useful because by selecting **Colors, Grey Scale**, I can view the graph as it would be printed on a black/white printer. To put a copy of only the active window that has *Windows* “focus” onto the Clipboard, press the keyboard combination [**Alt**][**Print Screen**] together.

## Caveats

The *HFTA* program is still under development. For validation of its results, there are precious little experimental data available showing careful measurements of HF elevation angles versus terrain contours. Very few radio amateurs have access to a helicopter to really measure their elevation patterns! *HFTA* does corroborate the results from a helicopter study done by WA3FET and associates some years ago.

### ACCURACY OF TERRAIN DATA

The terrain data itself from topographic maps can be “sparse” or somewhat questionable. Irregularities that can be seen with the naked eye from the base of the tower are sometimes not shown on a topo map, perhaps because a map was created years ago, before things were leveled by bulldozers.

Furthermore, if you are using Shuttle Radar Topographic Mission (SRTM) terrain data you have to recognize that a radar will see the tops of trees in a dense forest, not necessarily seeing the underlying ground. And the area behind a steep peak will probably be partially blocked from sight of the Space Shuttle-mounted synthetic-aperture radar.

The terrain model used by *HFTA* assumes that the terrain is represented by flat “plates” connecting the elevation points in the \*.PRO file with straight lines. The model is two dimensional, meaning that range and elevation are the only data for a particular azimuth. Obviously, the real world is three-dimensional. To get a true picture of the full effects of terrain, a terrain model that shows azimuth along with range and elevation point-by-point would be necessary. The computational requirements for such a fully 3-D model, even with the detailed terrain data from *MicroDEM*, would be pretty horrendous.

You can get a feel for how your terrain affects signals launched in various azimuthal directions by using separate data files for these directions. For example, from my old QTH in New Hampshire, my coverage to central Europe goes from about 30° to 60°. I have thus evaluated azimuth shots for 5° increments: 30°, 35°, 40°, 45°, 50°, 55° and 60°. The overall effect for four azimuths for a single antenna height can be plotted together on one screen to visualize the effect of azimuth (and thus terrain shape). However, I will often plot the response of three real-world

azimuths, plus a flat-ground case. This way I can judge what happens with changes in terrain shape, compared to the result due only to the height over flat ground.

I had mentioned earlier that the internal mathematical model of an antenna is very simple and does not take into account mutual impedances between antennas in a stack. There is another simplifying assumption made inside *HFTA* — ray tracing is only done in the “forward” direction from the tower towards the ionosphere on a single azimuthal heading. In earlier versions of this program (*YT* and *YTAD*) I specifically limited the choices of antennas to directional antennas that had little gain in the backwards direction. In *HFTA* I’ve included a simple dipole model so that users can assess their own situations better. But the same program restrictions occur — ray tracing is still only done in the forward direction, despite the fact that a dipole is bidirectional.

### **WHAT ABOUT DISTANT MOUNTAINS?**

Some terrains may have tall mountain peaks that are further than 4400 meters from your tower base. I normally recommend that you specify a distance of 4400 meters and a spacing of 30 meters between distance samples in *MicroDEM*. *HFTA* can handle up to 149 data points (150 including the tower base), so a typical PRO file will contain 149 points. You can manually edit a terrain file to include a 5,000-meter peak at, say, 8000 meters away by deleting the last line in a file, and then adding a line (using an ASCII word processor) saying: “8000 5000”.

### **ACCURACY AND TESTING THE RESULTS**

What would I estimate as the “accuracy” of *HFTA* elevation predictions? I would say that I would trust the results within plus/minus 3 dB. In other words, take *HFTA* results with a grain of salt. Don’t obsess with changing the height of your antenna by fractions of a foot to see what happens!

Having said that, now I must state that it *is* a good idea to compare elevation patterns in intervals of perhaps 1 foot to assess whether *HFTA* is generating reasonably smooth results. Often, the  $\frac{1}{4}^\circ$  steps used in the program don’t align exactly and artificial spikes (or holes) can be created. This is inherent in any ray-tracing program and can only be eliminated by using extremely small angular step increments — and doing so would slow down execution even more.

After I do an evaluation for a particular antenna height, I will often specify an overlay of three heights separated by one foot each. For example, if you are interested in a single antenna at a height of 80 feet on 14.0 MHz for the K5MA-330.PRO terrain, you might first compare three heights of 79, 80 and 81 feet, bracketing that height. The three curves overlaid on each other look relatively smooth, except there is a 1.4-dB “bump” for the 79-foot height.

Now, run three heights of 80, 79 and 78 feet. Now, the curves for 78 and 79 feet look smooth, but the 80-foot curve has a noticeable dip. This means that spurious artifacts of the ray-tracing process are occurring at 80 feet in the program — but these would not occur in the real world. The solution: don’t use the 80 foot point in the computer analysis, but you would mount your real antenna at that 80-foot height if you like the response at 79 or 81 feet.

## **FEEDBACK, PLEASE**

I would greatly appreciate feedback from you about this program. If you have access to validation data, I'd surely like to hear about it!

R. Dean Straw, N6BV  
Senior Assistant Technical Editor (retired), ARRL  
e-mail: [n6bv@arrl.net](mailto:n6bv@arrl.net)

## Appendix A — Preparing a Terrain Data File

*HFTA* needs an ASCII input file with the terrain data in a particular azimuthal direction from the base of your tower. Terrain data may be in feet or in meters. There are four ways in which you may obtain terrain data, and the pros/cons for each will be discussed in detail in this Appendix:

1. Manually from USGS paper topographic maps.
2. From the USGS DEM (Digital Elevation Model) maps database.
3. From the USGS NED “seamless” electronic maps (National Elevation Database).
4. From SRTM 3-arc-second electronic maps (Shuttle Radar Topography Mission) for areas outside the USA.

Some sample data files are included with *HFTA*; for example, N6BV-45.00.PRO and N6BV-330.00.PRO, meaning N6BV to Europe (at 45° azimuth) and to Japan (at 330°). My old station was located on a small hilltop in Windham, New Hampshire. These sample files have PRO filename extensions, meaning PROFILE. They were created from DEM electronic maps.

### Latitude/Longitude at Your Tower Base

One important piece of information you will need is the position of your tower. One way to get this is to place a hand-held GPS receiver out at the base of your tower. Note that you may have to smooth out the latitude/longitude GPS data by taking a number of measurements and then averaging them to obtain an accurate location for your tower.

Another way to determine your tower position is to use *Google Earth* to find your street address, zoom in and then home in on the exact latitude and longitude of your tower. You should record the position of the base of your tower in your notebook for later use.

### The Old-Fashioned, Paper-Map Way

The “old-fashioned” way to prepare a terrain profile was to buy an actual paper USGS topographic map and painstakingly measure out the terrain data starting at a point representing your own tower’s base, entering at each point along a desired azimuthal direction the distance from the base and the elevation at that point into a disk file. For some parts of the world, where digital terrain data isn’t available on the Internet, using a paper topographic map may be your only choice.

If you examine the contents of a sample file using an ASCII word processor, you will find that the data are arranged in two columns, separated by a tab, space or comma. Each line is terminated with a carriage-return/linefeed and each line represents a single point. For example, to evaluate my terrain towards Europe from my old location in New Hampshire, I drew a line from the base of my tower at an azimuth of 45° towards the center of Europe. Where this line crossed each contour on the topographic chart, I measured the distance from the tower base and entered it into the disk file. Here is a sample of a typical data set I generated manually.

feet	
0	430
200	420
500	410
700	400
800	380
900	360
1000	340
1550	360
2200	340
4800	340
13200	360

The first data line starts at the base of the tower, at 0 feet distance. The elevation height above mean sea level (also known as ASL, standing for Above Sea Level) at my old tower base was 430 feet. The next line in the data files shows that 200 feet from the tower base the elevation is 420 feet; at 500 feet the elevation is 410 feet, etc. I entered data at distances from the tower for more than 13,000 feet (4000 meters), because even at that distance the effect is noticeable on elevation pattern for low frequency antennas, like a 40-meter Yagi. *HFTA* will accept input of up to 149 data points in an input terrain file, as mentioned before.

This method of producing terrain data manually is *extremely* labor-intensive. It was also hard on the eyes, requiring a good magnifying glass and a steady hand with a set of calipers to measure off the distance on the horizontal scale at the bottom of the paper map. For relatively uncomplicated terrains (that is, ones not located in rugged mountains), I could complete a single azimuth's data profile in about a half hour. To show all azimuths of interest ("boxing the compass," as mariners are found of saying) takes a *very* long time!

### TECHNOLOGY TO THE RESCUE — *MICRODEM*

Kevan Nason, NS4T, brought to my attention a really fine program that manipulates electronic topographic data. The mapping program is called *MicroDEM* and a professor at the US Naval Academy, Dr Peter Guth, is the author. Professor Guth and the US Naval Academy have graciously allowed ARRL to put *MicroDEM* on the CD-ROM that accompanies this book. *MicroDEM* automatically makes numerous terrain profiles, once you have downloaded the appropriate electronic map files, described in detail later in this Appendix.

### VERSIONS OF *MICRODEM*

The version (Alpha 7) of *MicroDEM* that is included presently on the CD-ROM that accompanies this edition of *The ARRL Antenna Book* can create terrain profile files with USGS DEM (Digital Elevation Model) and NED (National Elevation Dataset) data, but doesn't work with SRTM (Shuttle Radar Topographic Mission) terrain data. (See **Appendix B** for instructions on setting up the Alpha 7 version.)

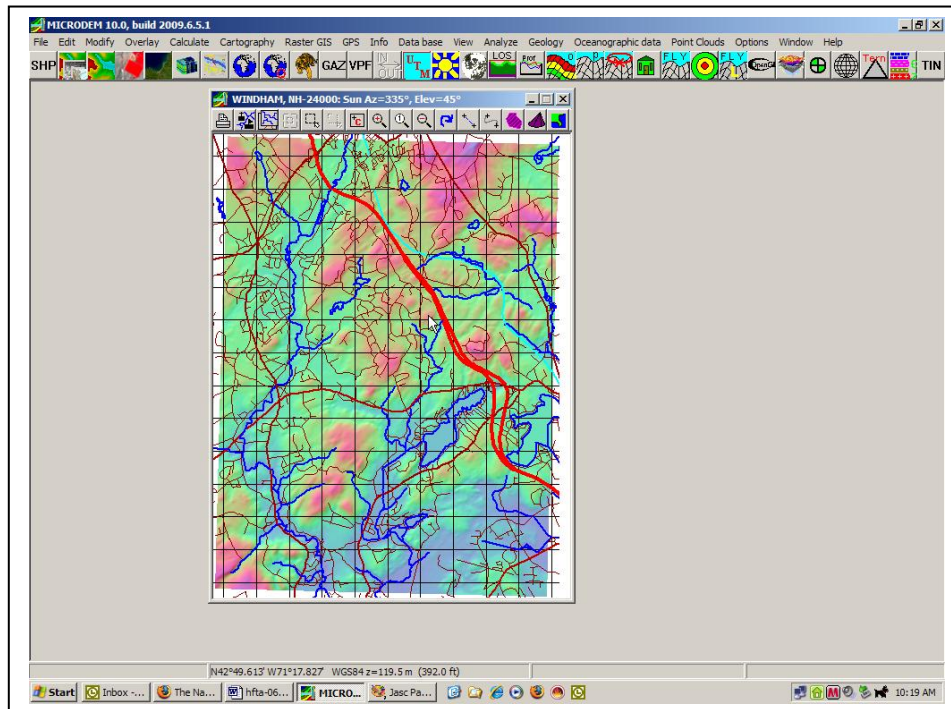
Dr Guth has modified versions of *MicroDEM* after June 6, 2009, to work correctly with SRTM input. You will have to go to the *MicroDEM* website to download the complete basic package, which is about 55 MB in size. After you have installed the basic version, you must then download the latest executable *Microdem.exe*, following instructions also on the site. Later versions of



*MicroDEM* will work with all DEM, NED and SRTM data sets.

<http://www.usna.edu/Users/oceano/pguth/website/microdemdown.htm>.

Once you have installed *MicroDEM*, bring it up on-screen. **Fig A1** is a screen-shot of the program with the Windham, NH quad map displayed, together with Tiger US Census data showing roads, highways and streams. More on Tiger later.



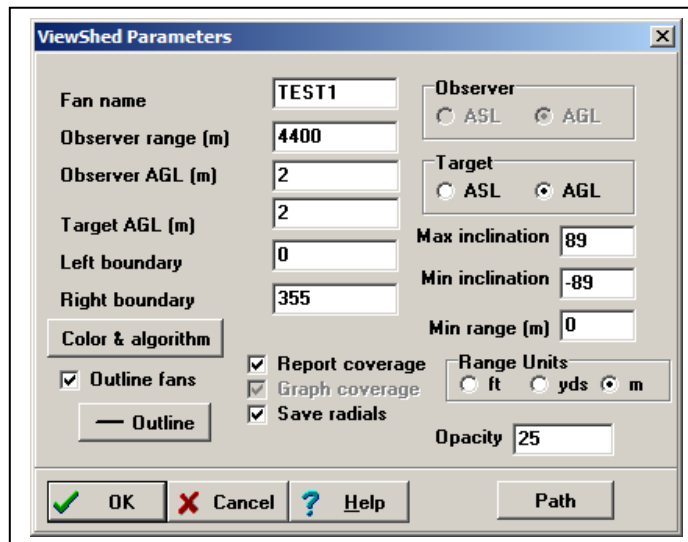
**Fig A1**—Screen shot from *MicroDEM* program, showing Windham, NH, region.

### SETTING OPTIONS IN THE LATEST *MICRODEM* FROM WEB SITE

If this is the first time you've used the *MicroDEM* program, you need to set some options to generate data for *HFTA*. Click on the **Options** menu listing at the top of the main window.

- Select the **Units** tab.
- You probably will want to specify in the **Lat/Long** textbox the exact way you enter or show latitude and longitude. For example, let's say that your GPS shows your position at 42° 4' 30" N latitude and 82° 7' 35.1" W longitude. This is the so-called "degrees/minutes/seconds" method of showing latitude or longitude. You would select the "Decimal seconds" option. However, if your GPS showed the same position as 42.07500° N and 82.12641° W, this is expressed in "Decimal degrees." Click the **OK** button when finished.
- Click on the **Coordinates** tab. In the **Verify** box, click on the option **Keyboard entry**. In the **Show roam on all maps** box check the **Reasonable** option. Do this also for the **Verify Graphical Selections** box. Click **Keyboard selection for target run**. The values for latitude/longitude determined by double-clicking the mouse will now bring up a verification box in which you can type the exact coordinates. Click the **OK** button when finished.

- Click on the **Views** tab and then click the **Weapons Fans** button. Click the **LOS and fan algorithm** button. Make sure that the box labeled **Radials from zoom map size** is *not* checked. Now, click **Radial lines, discrete**. Verify **Ray Spacing** is 5° (the default value). Click **Constant radial spacing** and then verify **Point Spacing (m)** is 30 meters (also the default). Click **OK** to return to the **Fan Drawing Options** window.
- Set range rings to show constant-sized circles surrounding your tower location. I recommend radii of 2200 and 4400 meters. First, check the box **Draw range circles**. Now click on the **Range circles** button and then type 2200 for the first range ring and 4400 for the second. Click **OK** to exit this window.
- Set the default subdirectories by clicking the **Directories** tab. *MicroDEM* creates a subdirectory system where map data will be stored, usually in x:\Mapdata, where the “x” denotes the disk drive you select during installation. The radial \*.PRO files you will be creating later will be stored in the x:\Mapdata\MD-PROJ\Fans subdirectory.
- Generate a **Weapons Fan** to set additional default parameters. First, load the “HangRockCanyon” sample DEM map using the **File, Open, Open DEM** menu selections. Then click **Calculate, Intervisibility, Viewshed**. Move the cursor near to your location and double-click the mouse. Type in the desired latitude and longitude and then click **OK**. A new **ViewShed Parameters** window will open, as shown in **Fig A2**. Make sure you check **Save radials** so that terrain profiles will be saved to disk.



**Fig A2—Setting up ViewShed Parameters after double-clicking a location.**

- Close the **Options** dialog and then the *MicroDEM* program to save your options to disk.

## Getting Digital Map Data for the USA

As mentioned above, for the USA, the USGS (US Geologic Survey) maintains two types of public-domain terrain data sets on the Internet. *MicroDEM* can use either of these data sets to create terrain profiles for *HFTA*. There are advantages and disadvantages to each method:

- DEMs (Digital Elevation Model) are essentially digital versions of the 7.5-minute quad paper topographic maps with which most US hams (or hikers) are familiar.
- NEDs (National Elevation Dataset) are “seamless” versions of the paper topographic maps.

### USGS DEM MAPS

The DEM datasets are available from several commercial vendors. Some of these vendors charge no fees for limited Internet access to the data. The NED datasets are available directly from US Geological Survey, EROS Data Center, Sioux Falls, SD, on the Internet. I thank Pete Smith, N4ZR, for giving me some vital tips on how to download and use NED files.

Downloading a specific DEM is usually faster than downloading a NED data file because the DEM is generally smaller in size, by a factor of about two. However, you may need to merge as many as four DEMs to cover an area large enough to create terrain profiles around a particular tower location. Furthermore, finding the specific DEM(s) for a particular tower location can involve quite a bit of hunting around at several Web sites, and you also must know the counties in which various quads are located. In general, I recommend DEM files despite the merging challenges, since the absolute accuracy of the DEM files appears to be better than of the “smoothed” seamless NED files, especially on challenging terrain — such as on a mountaintop.

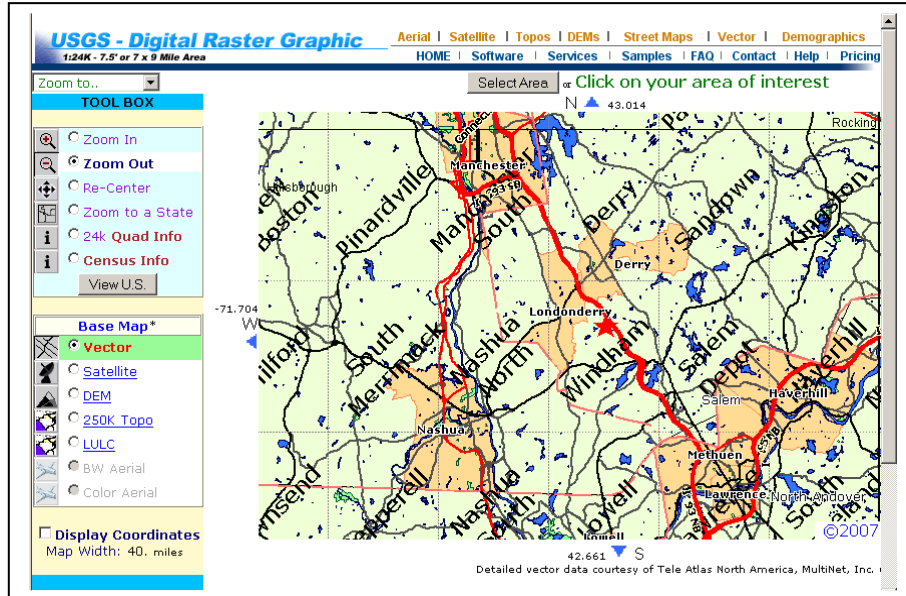
You need to know several simple facts before attempting to download DEM digital-terrain data from the Web: the state and county, and possibly the ZIP Code too. It is very useful to have an exact street address as well, which you can often find at <http://www.qrz.com/>. You will find that it may not be immediately obvious what names the USGS (US Geologic Survey) has used to label their quad 1:24000 topographic maps.

To see an overview map that shows the quad names near your location, go to the following URL for MapMart: <http://tinyurl.com/q8hleu>. You will be presented with a map of the entire USA. The easiest way to find an exact location is by specifying the street address by clicking in the “Zoom to” drop-down box in the upper left-hand corner. See **Fig A3**. The red star was the location of the N6BV mailbox at the front of the property when I lived in New Hampshire.

You will need to “Zoom Out” to see the names of the quad topo maps surrounding your target location. Place the cursor on the red arrow when zooming out. Write down the quad names surrounding your location. If your location is near the edge of a quad map (as many locations are), you will need to download not only the quad map for your location, but also other nearby quads.

You may find it necessary to download and “merge” as many as four different quads to cover a given location if it is located in the corner of its main quad map. For my old location in Windham,

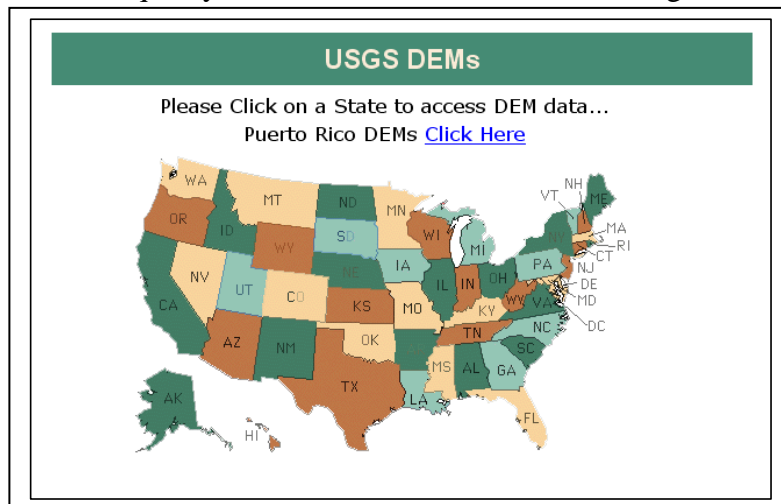
NH, I found it necessary to download the Derry quad in addition to the Windham quad and merge the two.



**Fig A3 – Result of zooming out four levels after searching for the exact street address at N6BV’s old QTH in Windham, NH. The red star shows the N6BV location, bounded by topo maps labeled Windham, Derry, Salem Depot and Sandown. Note checkbox “Display Coordinates” at lower left that allows you to display latitude/longitude at the cursor, if you wish.**

### Download DEMs

Go to this URL to download the DEMs: <http://data.geocomm.com/dem/demdownload.html>. You must register once for free downloading of DEMs on this site. On the USA map shown in **Fig A4**, click on your state and select your county. Click on the link **Digital Elevation Models (DEM) - 24K**. (The label “24K” refers to the fact that this topo map has a scale of 24,000:1.) Now, select the name of the quad you want to download and click the green **Download** button for that quad.



**Fig A4—USGS map selector screen. Click on your state.**

You will be presented with a link to click on, with a label similar to this: **1667372.DEM.SDTS.TAR.GZ (30 meter)**. When saving the map to disk, I usually edit this confusing numerical name to something I can relate to, such as **Windham\_NH.SDTS.TAR.GZ** to describe my old location in New Hampshire. Note that you might have a choice of data in increments of either 10 or 30 meters. Choose the 30-meter data, since the degree of precision in the 10-meter data is not warranted for HF work and because 10-meter DEM files take far longer to download. If there is no choice other than 10-meter data (as may happen for newer data sets), *MicroDEM* can still automatically create 30-meter terrain profile information for *HFTA* to use.

### Merging Topographic Maps

As mentioned above, at my old location in Windham, NH, I needed to merge two DEM maps, because my tower was located near the junction of two topographic maps. In *MicroDEM*, first make sure that you close any open DEMs.

- Click on **File** in the top menu and then click on **Data Manipulation**, followed by **Merge** and then **DEMs**. Click on **Dems—pick single** and you will be presented with a list of the DEMs located in your default maps subdirectory. Select the first DEM you want, followed by the second one you wish to merge. In my case, I selected the Windham, NH, and then the Derry, NH, quads.
- Then click **Cancel** to end the merging operation, and save the resulting merged file, using an appropriate filename, such as “Merged Windham\_Derry.DEM” or perhaps “N6BV.DEM.” Finally, close the merge operation by clicking on **File** and then **Close**.

### Merging 10-m and 30-m DEMs

Most USGS DEMs are 30-meter DEMs, meaning that the internal data is sampled at 30-meter horizontal intervals. Some of the newer DEMs, however, are sampled at 10-meter intervals. *MicroDEM* won't allow you to merge these two different types directly. There is a workaround, involving creating intermediate merged data files using the DTED format. At this point, however, you may well want to consider downloading a NED data file rather than working with multiple DEMs with different resolutions. However, if you choose to stick with DEMs, here's the method to merge, say, two 30-m DEMs and a 10-m DEM.

- With no map showing on-screen, click on **File** in the top menu and then click on **Data Manipulation**, followed by **Merge** and then **DEMs** and **Dems—pick single**.
- Select the first 30-m DEM filename, followed by the second one. Click **Cancel** to end the merge operation. Name the resulting file a temporary filename, say, “Merged.DEM” and get back to the main screen by closing the dialog boxes and the map.
- Now, you need to convert the merged 30-m DEM and the 10-m DEM to DTED files. Click on **File** in the top menu, followed by **Open, Open DEM** and select the new “Merged.DEM” file.
- Click **File** in the top menu, followed by **Save DEM** and then select the **DTED** format. Make sure that the “Lat spacing (seconds)” and “Long spacing (seconds)” are set to “3”. Click on **OK** and save to “Merged.DT1”. Again, get back to the main screen by closing the dialog boxes and the map.
- Click on **File** in the top menu, followed by **Open, Open DEM** and select the 10-m DEM file. Click **File** in the top menu, followed by **Save DEM** and then **DTED**. Make sure that the “Lat

spacing (seconds)” and “Long spacing (seconds)” are set to “3” (for 0.3 seconds). Click on **OK** and save this to a filename such as “10m.DT1”. Close the dialog boxes and the map.

- Now, you will merge the two DTED files. Click on **File** in the top menu and then click on **Data Manipulation**, followed by **Merge** and **DEMs** and then **DEMs—pick single**. It may be useful to type “\*.DT1” followed by [Enter] in the Filename box to bring up only the DT1 files you have created.
- Select *first* the merged 30-m file (“Merge.DT1”), followed by the 10-m file “10m.DT1”. Click **Cancel** to exit the merge function and name the file something else, perhaps “N6BV-1.DEM”.

Now, wasn’t that fun? It sounds very complicated but luckily you won’t have to do this very often. Again, however, downloading a NED file may be more efficient.

### Merging Across Different UTM Zones

You may live near where two maps you’d like to merge are in different UTM (Universal Transverse Mercator) zones. Because of distortions at the edge of any map, which after all is converting a round world (the Earth) to a flat-map representation, *MicroDEM* will not allow you to directly merge these two maps across UTM boundaries. You use the same basic procedure as above, using DTEDs to merge DEMs with 10-m and 30-m spacings rather than trying to merge the DEMs directly. For this example we’ll merge two DEMs called “Dem1.DEM” and “Dem2.DEM.”

- First, convert each DEM to DTED format. From the top menu, click **File, Open, Open DEM** and select “Dem1.DEM.”
- Save it as a DTED file by clicking **File** in the top menu, followed by **Save DEM** and then **DTED**. Make sure that the “Lat spacing (seconds)” and “Long spacing (seconds)” are set to “3” (for 0.3 seconds). Click on **OK** and save this as “Dem1.DT1”. Close the dialog boxes and the map.
- Process the second file. On the top menu click **File, Open, Open DEM** and select “Dem2.DEM.”
- Click **File** in the top menu, followed by **Save DEM** and then **DTED**. Make sure that the “Lat spacing (seconds)” and “Long spacing (seconds)” are set to “3” (for 0.3 seconds). Click on **OK** and save this as “Dem2.DT1”. Close the dialog boxes and the map.
- Now merge the two DTED files. Click on **File** in the top menu and then click **Data Manipulation**, followed by **Merge** and **DEMs** and **DEMs—pick single**. Again, it may be useful to type “\*.DT1” followed by [Enter] in the Filename box to bring up only the DT1 files you have created.
- Select “Dem1.DT1,” followed by “Dem2.DT1”. Click on **Cancel** to exit the merge function and name the file something else, again perhaps “N6BV-1.DEM”. Close the dialog boxes and the map.

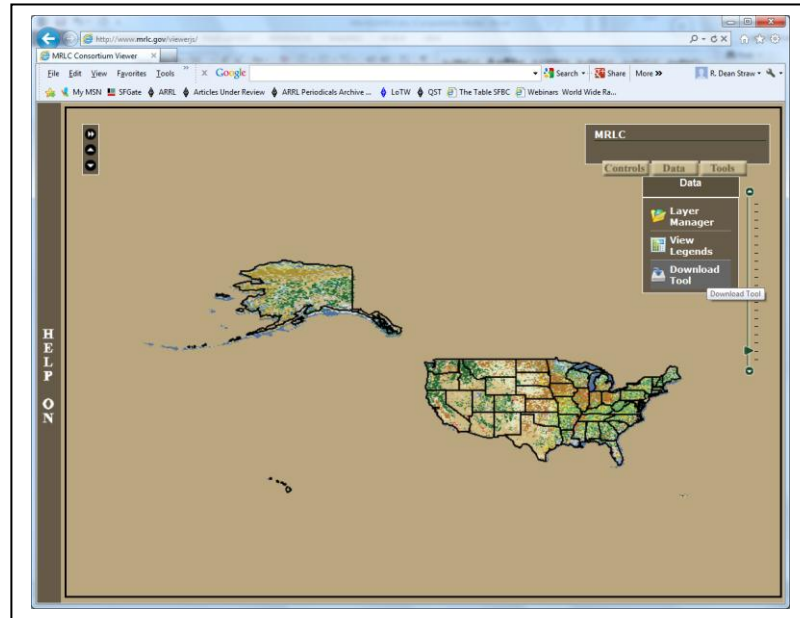
Again, luckily you won’t have to do this special merging procedure too often!

### SEAMLESS NED MAPS

*MicroDEM* can also use a “seamless” NED file to create a custom-sized topographic map centered on the latitude/longitude you specify for the tower’s base. The latest URL for the MRLC seamless data site is: <http://www.mrlc.gov/viewerjs/>. The default setting for downloading data is



1" NED, which is what we need in the USA. **Fig A5** shows the page that comes up for USGS Seamless Data Distribution. (Note: Be aware that USGS seems to change this page often.)



**Fig A5 — Initial setup window for MRLC Seamless Data page. The Data dropdown menu shows the Download Tool icon.**

The next screen will be similar to that shown in **Fig A6**. For example, at K1EA’s location in Western Massachusetts, his 15/20-meter tower is located at 42° 30' 52.96" N latitude and 71°33' 0.39" W longitude. You now have two choices for entering coordinates. The most labor-intensive one will place the tower exactly in the middle of the resulting NED DEM. Convert these to decimal degrees, remembering that minutes are 1/60 of a degree and seconds are 1/3600 of a degree:

$$42 + 30/60 + 52.96/3600 = 42.51471^\circ$$

$$71 + 33/60 + 0.39/3600 = 71.55011^\circ.$$

Now, add and subtract 0.1° to the tower’s position to define the rectangle surrounding the tower base:

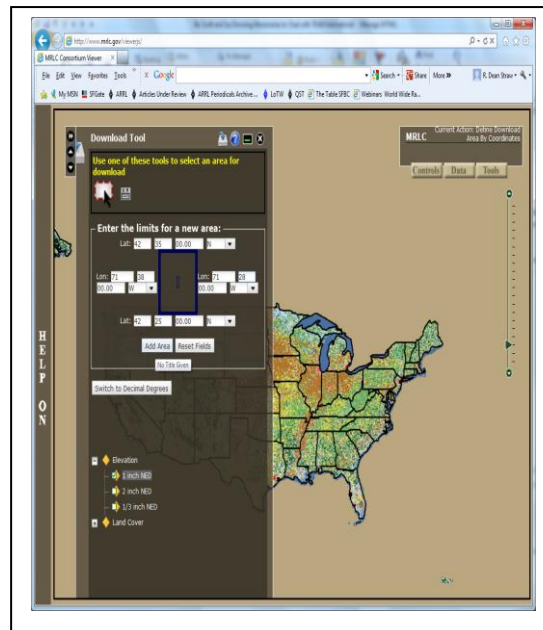
$$\text{Top latitude} = 42.61471^\circ \quad \text{Bottom latitude} = 42.41471^\circ$$

$$\text{Left longitude} = 71.65011^\circ \quad \text{Right longitude} = 71.45011^\circ.$$

The second method is easier to do in your head, but will result in a slightly offset NED file, but one that is still large enough to cover the area around your tower. Simply add and subtract 5 minutes to/from the latitude and longitude to set the borders. You can ignore the values for seconds. Following the above example, at a tower position of 42° 30' 52.96" N latitude and 71° 33' 0.39" W longitude, simply make the top border 42° 35' N, the bottom border 42° 25' N, the right



border  $71^{\circ} 28' W$ , and the left border  $71^{\circ} 38' W$ . See **Fig A6**, where the “Switch to Degrees, Minutes, Seconds” selection has been clicked previously to get to this “Download Tool” form. Note too that I checked the “1 inch” elevation data checkbox — they really mean “1 arc-second” rather than “1 inch.”



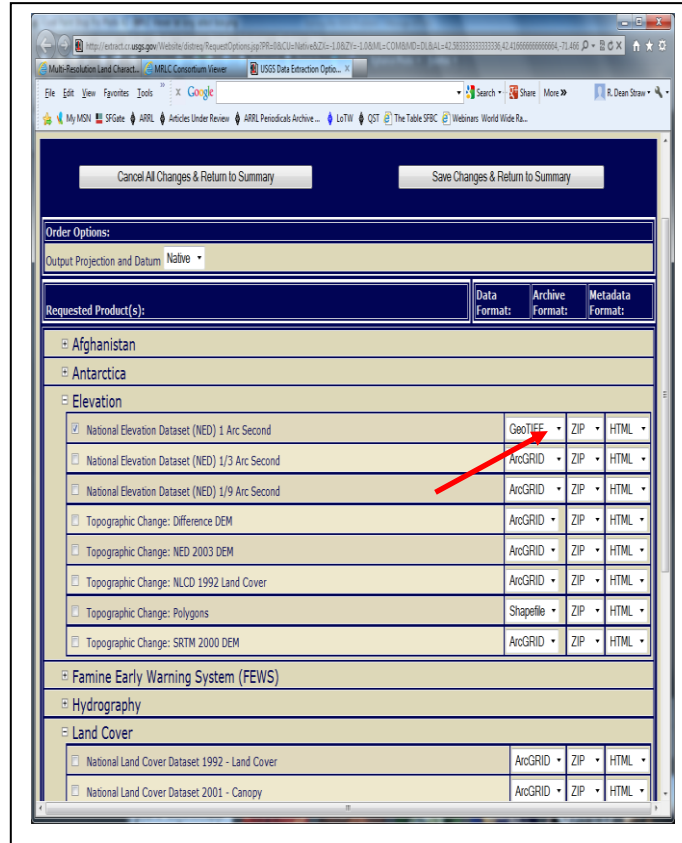
**Fig A6 — Specifying coordinates for NED download. Tower is at  $42^{\circ} 30' 52.96'' N$  latitude and  $71^{\circ} 33' 0.39'' W$  longitude, with 5 minutes subtracted and added to give corner boundaries for data selection box.**

However you decide to calculate the borders, now click on **Add Area** and you will next be asked whether you really want to go on. Click **OK** and you will next be presented with the **Summary Request Page**. Click the **Modify Data Request** button and the screen shown in **Fig A7** will appear. Scroll down the page and make sure the **National Elevation Dataset (NED) 1 Arc Second** box is checked and that you select **GeoTIFF** (instead of ArcGRID) for the **Data Format**. Scroll down to the bottom of the page and click on **Save Changes & Return to Summary** button. Now you're back at the previous screen, but with the required format of the download changed and updated.

Now click the **Download** button and follow the instructions to save the zipped file to your hard disk. You should write down the name of the zipped file and save it to the subdirectory where you usually place your DEM files. For a standard *MicroDEM* installation, that will be in: `C:\MapData\DEMs`.

We're done with USGS, but the fun isn't quite over yet, because if you run *MicroDEM* at this point, click **File** and then **Open, Open DEM** and try to open the zip file you just created, you will get an error. What you now need to do is to extract from the zip file (use *WinZip* or whatever

program you want) the file with the “tif” extension into the MapData\DEM subdirectory. When you open this \*.tif file, *voila!* You’ll have your topo map, open and ready to work on.



**Fig A7 — Modifying the “Data Request” for a GeoTIFF output format.**

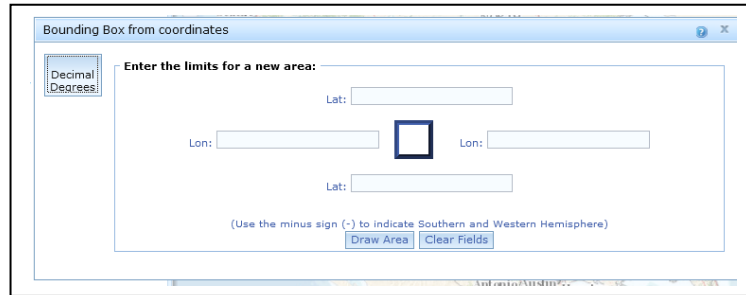
You can now save your seamless DEM as a DEM with a descriptive name (such as your call sign, for example), and open it directly to be sure it’s OK. At this point you can delete the \*.tif file and the associated zip file, because you won’t need them anymore.

### ANOTHER NED SOURCE

The USGS (United States Geologic Survey) maintains a web site they call the “The National Map.” Terrain data at this site is available in several formats, including some limited GeoTIFF data described in the last section. However, the web site changes quite a lot as they built it out, and trying to figure out where they’ve stashed things can be frustrating.

The URL is <http://viewer.nationalmap.gov/viewer/>. Click on the light blue arrow icon labeled “Download Data” at the upper right of the screen. A drop-down menu will appear and you will click on the link at the bottom, labeled “Click here to download by coordinate input.” This will open a box like **Fig A7**, but will only accommodate input in decimal degrees of latitude and

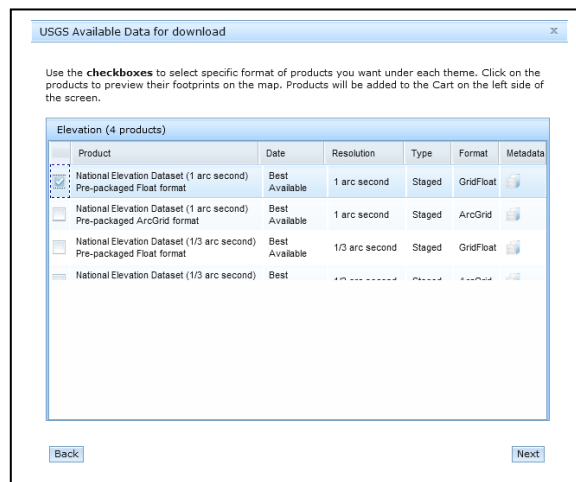
longitude. As in the previous method for gathering NED data, specify the upper and lower limits for latitude and longitude, plus and minus 0.1° of the station's position.



**Fig A7 — Input bounding box. Use decimal degrees to enter bounding latitudes and longitudes; that is, plus or minus 0.1 degrees of the station's position.**

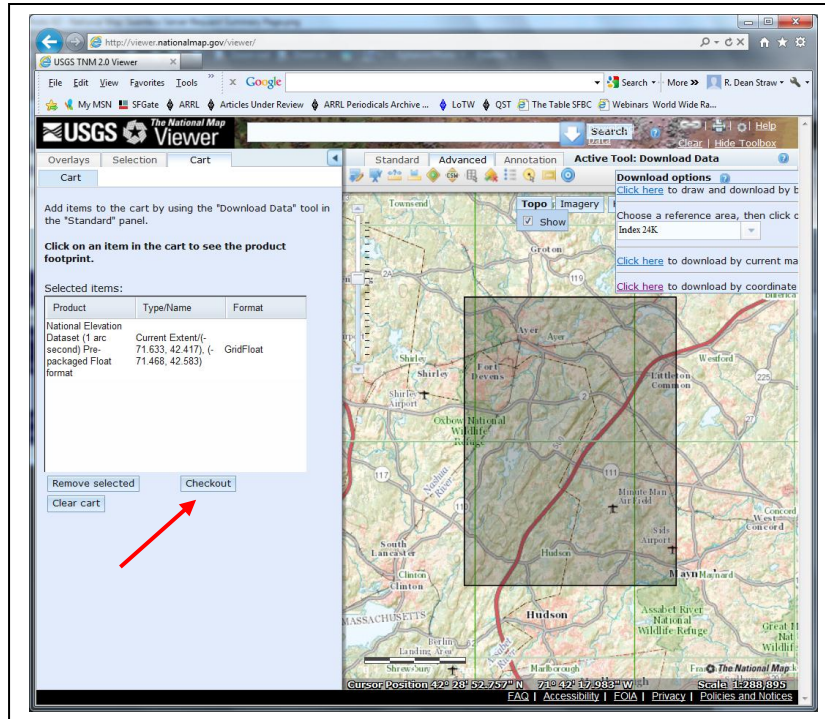
When you've finished defining the bounding box (be careful to specify West longitudes in the US as negative numbers), click the **Draw Area** button and choose "Elevation" data from the next list.

Now, click the **Next** button to bring up the "USGS Available Data for download" screen. Check "National Elevation Dataset (1 arc second) Pre-packaged Float format," otherwise known as "GridFloat." (Do not check the "1/3 arc second" format unless you want to download some huge files with that unnecessary amount of resolution.)



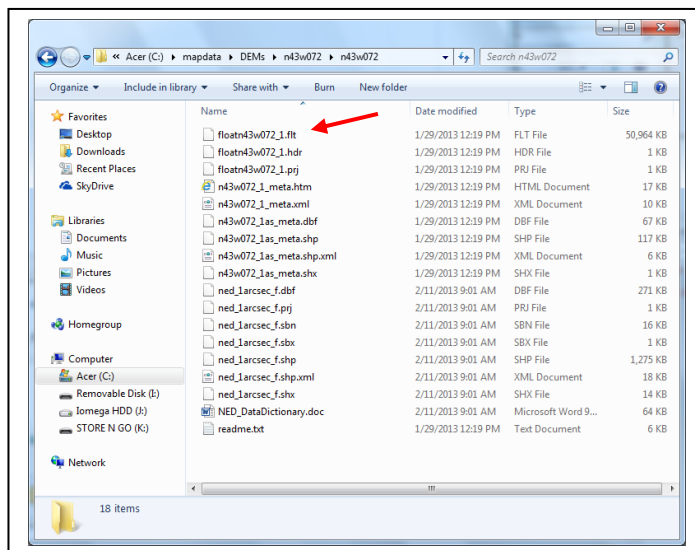
**Fig A8 — Choose GridFloat data format.**

Click **Next** again to bring up your shopping "Cart" on the left side of the screen and click the **Checkout** button. You will be asked to provide your e-mail address, twice, and then you can click **Place Order**. You'll be given instructions to open the e-mail that will be sent to you automatically when your data is available.



**Fig A9 — Click the “Checkout” button.**

When you receive the e-mail, click on the download link and “Save to” the specified ZIP file to your usual *MicroDEM* map subdirectory. By default this is C:\MapData\DEMs. USGS chooses a one-degree by one-degree block of data surrounding your station location, which can result in files exceeding 43 MByte in size. Once you have downloaded the ZIP file, you must unzip the data using a program such as *WinZip*. **Fig 10** shows an example of a *Windows Explorer* screen. The filename automatically chosen by USGS imbeds the upper left-hand corner latitude and longitude coordinates in it.



**Fig 10 — After unzipping.**

The first file in Fig 10, the one with the “flt” (float) extension, is the file you would open using *MicroDEM* to bring up a map. The rest of the files in the example subdirectory are also needed by *MicroDEM*. However, once you bring up a *MicroDEM* map, you can save it as a “MD DEM” file and erase the float directory and files.

# Getting Digital Map Data Outside the USA

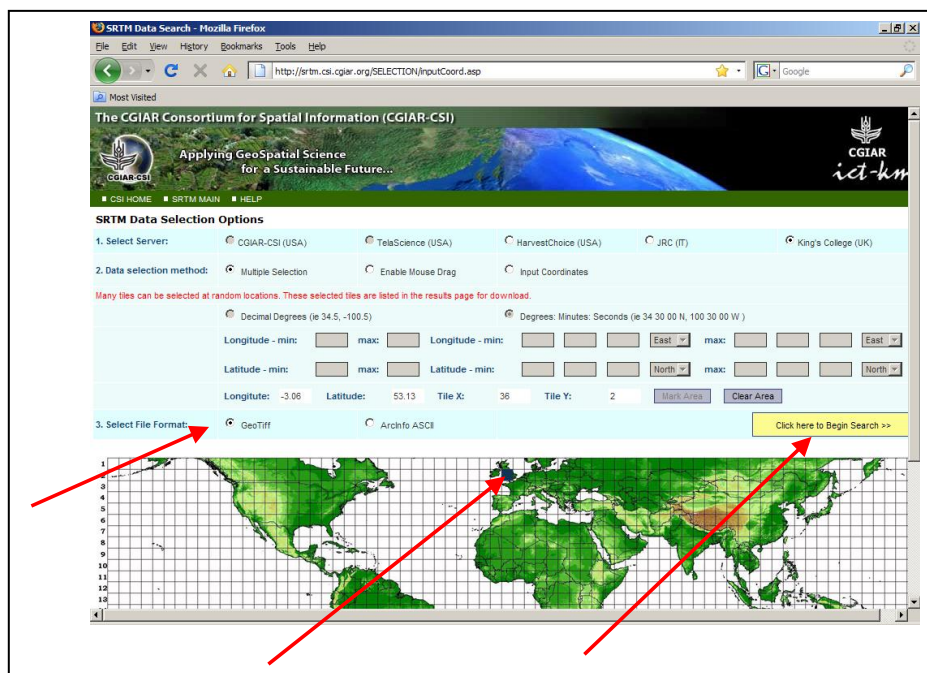
## DOWNLOAD AN SRTM FILE

The US government has released digital terrain data that covers 80% of the world (between 60° N and 54° S latitudes). The survey data was generated during a NASA Space Shuttle mission in February 2000, and is called SRTM (Shuttle Radar Topography Mission) data. Inside the continental USA, parts of Alaska, Hawaii, Puerto Rico and certain US Territories in the Pacific, SRTM data is available with a resolution of 1 arc-seconds (roughly 30 meters). Outside these areas, the US government has restricted the resolution to 3 arc-seconds (roughly 90 meters). Still, the SRTM digital data is easier to use to generate terrain profiles for *HFTA* than are any manual mapping methods.

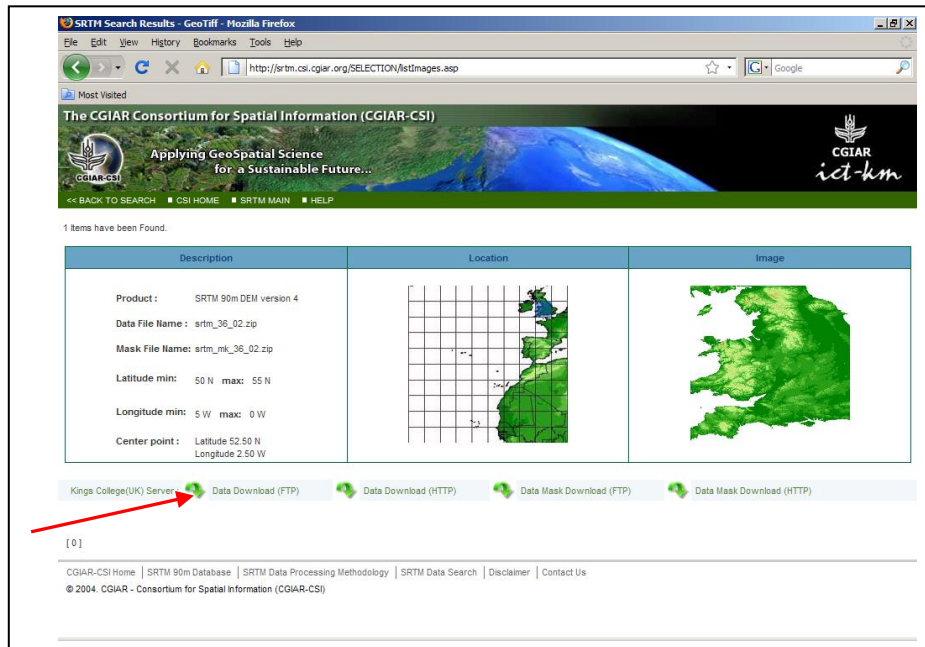
The easiest way to download 3 arc-second SRTM (Shuttle Radar Topography Mission) data that covers most of the world is to go to the website for the CGIAR Consortium for Spatial Information: <http://srtm.csi.cgiar.org/SELECTION/inputCoord.asp>.

You will see a worldwide map with clickable blocks covering areas for which you want to download topographic data. For example, let's download topo data for GM3SEK in southern Scotland. His tower is located at 54° 44.160' N, 4° 28.283' W. See **Fig A11**.

- Make sure the checkbox labeled Geo Tiff at the lower left is checked.
- Click on the box for the lower part of the UK.
- Now, click on the button **Click here to begin search**.
- Next, you'll see a page similar to the one shown in **Fig A12**, where the area chosen is zoomed in at the right to show some more detail.



**Fig A11** — Starting page for CGIAR-CSI repository for SRTM data.



**Fig A12 — Detailed view of area selected in Fig A11.**

- If this is the area you want, click on **Data Download (FTP)**. Save the zipped file to disk, probably to the c:\MapData\DEMs subdirectory if you did a standard **MicroDEM** installation.
- Use *WinZip* or the *Microsoft Explorer* program to extract the \*.TIF file from the zipped file. Since each block contains detailed data for 5° of latitude and 5° of longitude, each \*.TIF file will be about 70 MB in size.
- Open *MicroDEM* and click on **File, Open, Open DEM** to select a map.



## Creating Azimuth Terrain Files for *HFTA* in *MicroDEM*

You've finally managed to generate a digital map using *MicroDEM*! Now, you'll need your tower's exact latitude and longitude — which you've gotten from a GPS or from *Google Earth*. What we want now is for *MicroDEM* to generate terrain profiles in 5° steps of azimuth, with a radius of 4400 meters around your tower base. This represents enough distance for *HFTA* to create accurate reflection and diffraction ray-tracings to compute the far-field elevation responses.

Presuming that you have a map on-screen that covers the desired area, now click on **Calculate, Intervisibility, Viewshed** menu. (You can also click on the **Weapons Fan** icon on the top of the map window for this, if this icon is showing at the top of the map.) Double-click anywhere on the map and a data entry box will open, where you enter the exact latitude and longitude at your tower. Once you have entered these numbers and have clicked **OK**, another form, **Viewshed Parameters** will open. See **Fig A13**.

The screenshot shows the 'ViewShed Parameters' dialog box. The 'Fan name' is 'TEST1'. 'Observer range (m)' is '4400', 'Observer AGL (m)' is '2', 'Target AGL (m)' is '2', 'Left boundary' is '0', and 'Right boundary' is '355'. The 'Observer' and 'Target' radio buttons are set to 'AGL'. 'Max inclination' is '89' and 'Min inclination' is '-89'. 'Min range (m)' is '0'. The 'Outline fans', 'Report coverage', 'Graph coverage', and 'Save radials' checkboxes are all checked. The 'Range Units' are set to 'm'. The 'Opacity' is '25'. The 'OK', 'Cancel', 'Help', and 'Path' buttons are at the bottom.

**Fig A13 — Setting the ViewShed Parameters.** Note the “Save Radials” checkbox toward the bottom of the form. Make sure it is checked. The “Fan name” at top is the filename base under which the azimuthal profiles will be saved.

In the text box at the top in Fig A13, you choose a name for *MicroDEM* to use for subsequent map operations, perhaps “N6BV-1” for the first tower location at a particular site. The filename you specify will be what *HFTA* will use. For example, if you specify “N6BV-1”, *MicroDEM* will create 71 files at 5-degree intervals, labeled N6BV-1-0.00.PRO, N6BV-1-5.00.PRO, N6BV-1-10.00.PRO, ... up to N6BV-1-355.00.PRO.

Writing to disk takes about 5 seconds on a 1 GHz Pentium 3 computer running Windows 2000 Professional. Note that *MicroDEM* places the \*.PRO files in the subdirectory: x:\Mapdata\MD-PROJ\FANS, where “x:” is the subdirectory you chose on the **Options, Directories** tab. You may

want to move these files manually using *Windows Explorer* to another subdirectory of your choice after you finish working with *MicroDEM*.

Click the **Observer range (m)** text box and verify that it is 4400 meters, the default. Set the Right Boundary to 355 degrees. Make sure you have clicked the selection “Save radials” at the bottom. Don’t worry about setting the **Observer AGL (m)** or **Target AGL (m)** values. They’re set at default values of 18 m (60 foot tower) and 2 m (the height of a soldier). Click **OK** to finish creating the profiles.

## Other *MicroDEM* Capabilities

### BRING ON THE TIGER!

This next step is not totally necessary, but it significantly adds to the process if you can visualize how your terrain relates to the roads and streets near your location. This is where the US Census Bureau “Tiger” data comes into play. Go to the following URL: <http://www.census.gov/geo/www/fips/fips65/> and look up the 5-digit FIPS code for your county.

This file gives a list of the so-called “FIPS” numbers. These identify a Tiger file for a particular county in a particular state. (By the way, the term “Tiger” stands for “Topologically Integrated Geographic Encoding and Referencing,” just in case you were wondering.) In my case, I wanted to download Tiger information for Windham, NH, where the FIPS number is 33 015.

When you have the code (you’ll only need to do this once), go to <http://www.census.gov/geo/www/tiger/tiger2006se/tgr2006se.html> and find your state at the bottom of the page. Click on it and download the appropriate numbered zip file. For my old QTH in New Hampshire, I chose to download “tgr33015.zip” to my c:\mapdata\Tiger\NH subdirectory. (Note that I used the “Create New Folder” to create the “NH” subdirectory from the basic tree structure *MicroDEM* created when it was installed.) *Do not* try to change the name assigned to this zipped file or *MicroDEM* will not be able to find and associate it with DEMs you display. The internal zipped file structure creates a temporary directory with that number as a name.

Now, you can bring up the map and add Tiger data to it. Start *MicroDEM* and click on the **File, Open, Open DEM** selections from the top menu. For example, I might click on my merged file “N6BV-1.DEM.” Then I click on the map icon on the top of the merged map’s window — the one that looks like a miniature map of the southeastern USA. I select the file “tgr33015.zip” in the c:\mapdata\Tiger\NH subdirectory and then marvel at what happens.

### SETTING THE REFLECTANCE PARAMETERS

*MicroDEM* defaults to a gray “reflectance” display for elevation. I like to tweak the settings for this, by clicking at the top menu **Modify, Reflectance**. Sometimes I use a color display of elevations, so I may select **IHS elev**, with a **Vert Exag** of 8. Again, Fig A1 shows the resulting display for my merged map with Tiger overlay of roads in red and streams in blue.

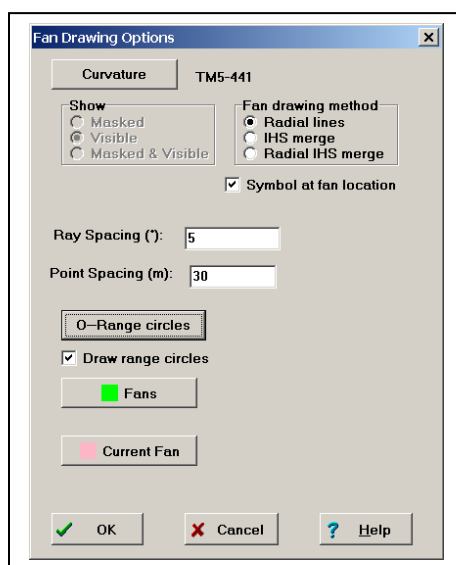
## Appendix B — Using the Older Version of *MicroDEM*

### SETTING OPTIONS IN THE VERSION OF *MICRODEM* INCLUDED ON CD-ROM

Obtaining a completely new version of *MicroDEM* involves downloading about 60 MB of data on the Internet. Some of you are still using dialup service and thus may be limited to using the version of *MicroDEM* originally included on the CD-ROM bundled with the 20<sup>th</sup> or 21<sup>st</sup> Editions of *The ARRL Antenna Book*. This limits you to the use of DEM or NED USGS data for the USA.

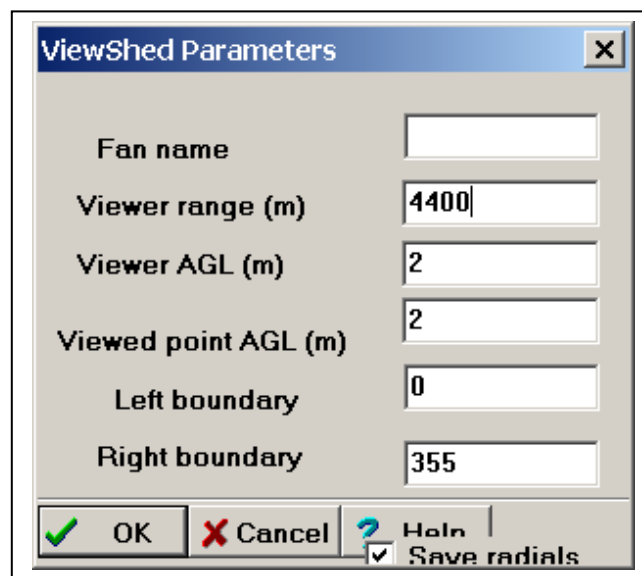
Here is how to set up the options in *MicroDEM*, Version 7.0 Alpha, the version on *The ARRL Antenna Book* CD-ROM. Click on the **Options** menu listing at the top of the main window.

- Select the **Units** tab (you may have to use the horizontal scroll arrows at the top to see all the possibilities for options).
- You may want to respecify in the **Lat/Long** textbox the exact way to specify or show latitude and longitude. For example, let's say that your GPS shows your position at 42° 4' 30" N latitude and 82° 7' 35.1" W longitude. This is the so-called "degrees/minutes/seconds" method of showing latitude or longitude. You would select the "Decimal seconds" option. However, if your GPS showed the same position as 42.07500° N and 82.12641° W, this is expressed in "Decimal degrees."
- Click on the **Coordinates** tab. In the **Verify** box, click on the option **Keyboard entry**. In the **Show roam on all maps** box click on the **Reasonable** option. Do this also for the **Verify Graphical Selections** box. The values for latitude/longitude determined by the mouse will now bring up a verification box in which you can type the exact coordinates.
- Now, click on the **Views** tab and then uncheck the box labeled **Missing values set to sea level**. Click the **Weapons Fans** button to open the Fan Drawing Options page. Specify **Ray Spacing** of 5° and **Point Spacing** of 30 meters. Make sure you click on the **Radial lines** option in the upper right-hand corner. See **Fig B1**.



**Fig B1—Fan Drawing Options. Make sure you click the Radial lines selection.**

- You may next want to set a range ring to show the circle surrounding your tower location. I recommend that you use a radius of 4400 meters. Use **Options, Views, O Range circles** and then type 4400 for the first range ring, 2200 for the second and zero for the others. Note that if you have selected “feet” for your units, this entry must still be 4400 meters, despite the label of feet that shows on-screen. Yes, this is a bit confusing.
- Set the default subdirectories by clicking the **Directories** tab. *MicroDEM* creates a subdirectory system where map data will be stored, usually in x:\Mapdata, where the “x” denotes the disk drive you select during installation. The radial \*.PRO files you will be creating later will be stored in the x:\Mapdata\MD-PROJ\Fans subdirectory.
- Next click on the **Weapons fan** icon (or click **Calculate, Intervisibility, and Viewshed**) and double-click anywhere on the map. A box will appear into which you type in the exact latitude and longitude, then click **OK**.



**Fig B2** — After you double-click the map in the “Weapons fan” process, this box will appear after you key in the exact latitude and longitude and click OK. Make sure that the “Save radials” checkbox is checked. Once you have selected this option, *MicroDEM* will continue to use Save radials as a default value.

Close the **Options** dialog and the *MicroDEM* program.