

1999 ARRL September VHF QSO Party Results

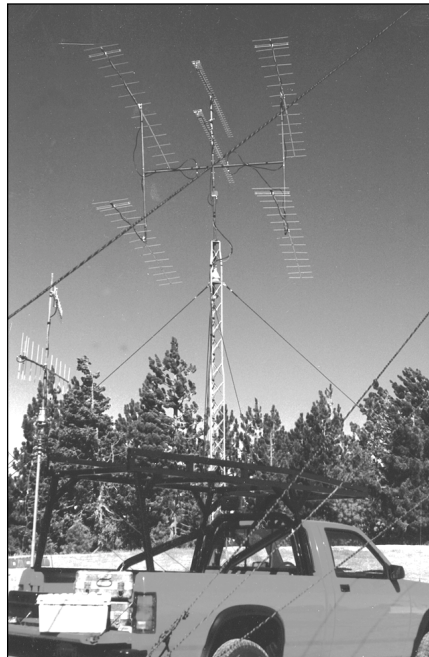
VHF/UHF

means a lot of different things to different people. Many hams immediately think of using their FM H-Ts or mobile radios to chat away on the local FM repeater driving to and from work. Packet will come to the minds of many who enjoy digital operating. And for chasing DX above 50 MHz, of course, it's hard to beat CW or SSB.

All it takes is a good contest to bring the best of VHF and UHF together—regardless of mode or location. You may be running FM contacts while perched on a mountaintop, or honing your rover skills with a friend while travelling 65 MPH down the interstate highway. You might test your SSB or CW QRP savvy after hiking to the top of a ridge behind your house, or you may choose to enjoy the mode of your choice from the comfort of your own shack. In whatever way you choose to compete, a VHF contest allows you to experience new opportunities in this wonderful avocation we call Amateur Radio.

The ARRL September VHF QSO Party netted 606 entries, with over 900 operators, including the operators at the various full and limited multi-operator stations. New to this annual fall VHF/UHF challenge was the inclusion of an Affiliated Club compe-

dition. Fourteen clubs entered the medium or local club categories for 1999, a number that is certain to rise in September 2000.



The multi-operator W6TOI group was well prepared on the West Coast and racked up a Top Ten finish in their category.

Jeff, W2FU, with Chris, K2CS, sharing the duties, set a new overall scoring mark for Rover entries with a score of 220,175. Their effort stands as the Atlantic Division record as well. They were joined as new rover division record setters by N4OFA in the Delta division, N1MJD in New England division, NK4Q in the Southeastern division, N6TEB in the Southwestern division and AB5SS in the West Gulf division.

Four new division records were established in the single-operator category. Congratulations to new record holders K1RZ in the Atlantic division, KA1ZE in the New England division, N9VM in the Pacific division and K5IUA in the West Gulf division. Rounding out single-op division record setters were KQ6QW and VE7DXG who set QRP portable marks in the Southwestern division and Canada respectively.

Multioperator and limited multioperator efforts were in abundance, and their operators accounted for approximately a third of the participation in the contest. The group efforts at K3MQH in the Atlantic division, NØUK in the Dakota division, K7VHF in the Northwestern division, and W6TOI in the Southwestern divisions all established new multioperator records for their divisions. New limited multioperator

Northeast Region (New England, Hudson and Atlantic Divisions; Maritime and Quebec Sections)			Southeast Region (Delta, Roanoke and Southeastern Divisions)			Central Region (Central and Great Lakes Divisions; Ontario Section)			Midwest Region (Dakota, Midwest, Rocky Mountain and West Gulf Divisions; Manitoba and Saskatchewan Sections)			West Coast Region (Pacific, Northwestern and Southwestern Divisions; Alberta, British Columbia and NWT/Yukon Sections)		
KA1ZE	359,324	S	K2UOP/8	89,376	S	WA8WZG	388,144	S	K5IUA	86,426	S	N6HKF	52,407	S
K1RZ	223,450	S	K4QI	62,860	S	N2BJ	134,720	S	W8CM	58,000	S	N9VM	51,450	S
WA2FGK	201,083	S	W4RX	44,408	S	K2YAZ	132,396	S	W3XO/5	37,584	S	N7STU	37,736	S
(K2LNS,op)														
K3VGX	10,608	Q	W4FRZ	12,540	Q	N8A (N8XA,op)	7,097	Q				VE7DXG	16,254	Q
K1ZE	6,536	Q			N9MYK	3,591	Q				KQ6QW	12,930	Q	
WB2AMU	1,900	Q			N9LAG	636	Q				K6LMM	6,075	Q	
W2SZ/1	1,418,436	M	K8GP	1,108,905	M	WØUC	188,710	M	NØUK	119,579	M	W6TOI	96,942	M
K3MQH	792,225	M	K4SZ	5,192	M	W9ICE	151,076	M	KK5IH	11,242	M	K7VHF	55,872	M
K1WHS	365,781	M						KØFF	6,890	M	N1VM	54,897	M	
K3YTL	384,033	L	W4IY	244,110	L	N8ZM	20,995	L	NØQJM	108,575	L	W2ODH/6	155,500	L
NC11	286,029	L	AA4ZZ	171,125	L	N19E	17,536	L	N5XU	12,864	L	W7AV	6,437	L
NS9E	231,080	L	W4NH	74,834	L	N8PVT	5,002	L				WB7FJG	4,648	L
W2FU	220,176	R	N4OFA	29,862	R	WB9SNR	103,240	R	AB5SS	63,745	R	N6TEB	75,864	R
N1MJD	143,256	R	NK4Q	9,928	R	N8KWX	64,962	R	W9FZ	26,523	R	N6DN	33,320	R
WA2IID	26,448	R	WBØQGH	1,440	R	K8WW	55,528	R	WB5VYE	23,180	R	WB7DHC	17,424	R

Top Ten

Single Operator		QRP Portable		Multioperator		Limited Multioperator		Rover	
WA8WZG	388,144	VE7DXG	16,254	W2SZ/1	1,418,436	K3YTL	384,033	W2FU	220,176
KA1ZE	359,324	KQ6QW	12,930	K8GP	1,108,905	NC1I	286,029	N1MJD	143,256
K1RZ	223,450	W4FRZ	12,540	K3MQH	792,225	W4IY	244,110	WB9SNR	103,240
WA2FGK	201,083	K3VGX	10,608	K1WHS	365,781	NS9E	231,080	N6TEB	75,864
(K2LNS,op)		N8A	7,097	N2PA	233,260	AA4ZZ	171,125	N8KWX	64,962
N2BJ	134,720	(N8XA,op)		W0UC	188,710	W2ODH/6	155,500	AB5SS	63,745
K2YAZ	132,396	K1ZE	6,536	W9ICE	151,076	N2NK	128,478	K8WVV	55,528
K3DNE	122,430	K6LMN	6,075	N0UK	119,579	WB1GQR	121,032	VE3OIL	34,290
KE8FD	117,000	N9MYK	3,591	W6TOI	96,942	N0QJM	108,575	N6DN	33,320
K1UHF	113,875	KQ6EE	3,528	W2EA	79,866	K2BAR	103,620	N4OFA	29,862
K8TQK	106,894	WB2AMU	1,900						

QSO Leaders By Band

Single Operator/ QRP Portable		222 MHz		432 MHz		902 MHz		1296 MHz	
50 MHz		144 MHz		432 MHz		902 MHz		1296 MHz	
KA1ZE	257	K1UHF	318	WA8WZG	94	KE6GFF	159	WA8WZG	61
W3EP	223	KA1ZE	269	KA1ZE	78	K1FO	154	KA1ZE	42
K1RZ	198	K1RZ	250	K1UHF	74	WA8WZG	154	K1RZ	40
W2YV	193	WA2FGK	249	N2BJ	74	KA1ZE	105	WA2FGK	34
N1MIA	186	(K2LNS,op)		K1RZ	70	N2BJ	104	(K2LNS,op)	
		K3VGX -Q	221					K1UHF	33
Multioperator		222 MHz		432 MHz		902 MHz		1296 MHz	
50 MHz		144 MHz		432 MHz		902 MHz		1296 MHz	
K8GP	607	K3MQH	736	W2SZ/1	192	W2SZ/1	307	W2SZ/1	124
K3MQH	566	K8GP	614	K3MQH	165	K3MQH	272	K8GP	97
W2SZ/1	523	W2SZ/1	587	K8GP	151	K8GP	227	K3MQH	26
K3YTL -L	476	K3YTL -L	489	K3YTL -L	151	K3YTL -L	205	N2PA	25
NC1I -L	438	NC1I -L	467	W2ODH/6 -L	137	NC1I -L	201	K1WHS	25

-Q denotes QRP Portable
-L denotes Limited Multioperator

Multiplier Leaders By Band

Single Operator/QRP Portable		222 MHz		432 MHz		902 MHz		1296 MHz	
50 MHz		144 MHz		432 MHz		902 MHz		1296 MHz	
KA1ZE	74	K2YAZ	66	WA8WZG	38	KA1ZE	41	WA8WZG	31
WB2WIH	69	KA1ZE	58	KA1ZE	38	WA8WZG	41	KA1ZE	25
K5IUA	68	WA2FGK	57	WA2FGK	30	K4QI	34	WA2FGK	17
W2YV	63	(K2LNS,op)		(K2LNS,op)		WA2FGK	34	(K2LNS,op)	
VE3KZ	57	KE8FD	56	K8TQK	29	(K2LNS,op)		K1RZ	17
		K8MD	53	KE8FD	29	K1FO	34	KE8FD	17
Multioperator		222 MHz		432 MHz		902 MHz		1296 MHz	
50 MHz		144 MHz		432 MHz		902 MHz		1296 MHz	
K8GP	116	K8GP	94	K8GP	52	K8GP	61	W2SZ/1	27
N0QJM -L	98	K3MQH	76	K3MQH	51	K3MQH	51	K8GP	24
K3MQH	88	N0UK	72	K3YTL -L	44	K3YTL -L	48	K1WHS	18
W0UC	83	N0QJM -L	68	NS9E -L	43	W4IY -L	48	N2PA	15
NS9E -L	83	W4IY -L	66	W4IY -L	42	W2SZ/1	46	K3MQH	15

Q denotes QRP Portable
-L denotes Limited Multioperator

records were established by the crew of N0QJM in the Dakota division and the N2NK effort in the Hudson division.

The year 2000 running of the September VHF QSO party will be held September 9-11. Now is the time to plan your participation. Remember, in order for your club to participate in an Affiliated Club Competition event, it must be up-to-date with its records and documentation with the ARRL. Also, we must receive a minimum of three entries from eligible club members attributing their points to your club's effort. Finally, don't let your club secretary forget that they must submit a list of all eligible members (not a general club roster) to the Contest Branch within 30 days after the end of the contest. It will be helpful to review

the rules for Affiliated Club competitions in the General Rules for All ARRL Contest, which is printed annually in the November issue of *QST*. They may also be found online at the Contest Branch home page at <http://www.arrl.org/contests>.

As announced in the January *QST*, the VHF/UHF/Microwave page on the ARRLWeb is an excellent resource for expanding your technical expertise as well as finding information about "What's Available" in this challenging operating arena. An electronic "field trip" to <http://www.arrl.org/tis/info/uhf-mw.html> might prove to be one of your most valuable assets as you expand your activities in the highest frequency ranges.

One more rule reminder: effective

January 1, 2000 there are now separate High and Low power categories for regular single operator stations. This will allow even tighter competition in what remains one of the more popular VHF/UHF operating events on the ARRL calendar.

The impact of license restructuring on VHF/UHF contesting is likely to be minimal. Except for the Novice licensee that has limited privileges on these bands, every licensed amateur can operate with full VHF and UHF privileges. By the time the second full weekend in September rolls around for the last ARRL VHF contest of the twentieth century, all licensed hams will have an opportunity to make the September VHF QSO party the "last great bash" of the VHF year. See you on the air that weekend!

Affiliated Club Competition Results

Medium Club	
Potomac Valley RC	11 2,240,468
New England Weak Signal	14 1,003,530
Badger Contesters	26 406,912
Northern Lights RS	15 380,838
Rochester VHF Group	11 375,910
Local Club	
Murgas ARC	4 589,992
Downey ARC	3 175,764
Bergen Amateur RA	3 133,715
South Jersey RA	4 89,614
Rocky Mountain VHF Society	5 59,747
Mt. Airy VHF RC	4 34,389
ARA of Southwest Florida	4 30,974
Western States Weak Signal Society	4 16,335
Schenectady ARA	8 10,371



Parked along the Skyline Drive, overlooking the beautiful Shenandoah Valley in Virginia, N1MJ.D used his rover time not only to place second in the overall standings in the category, but also to enjoy some of the most magnificent scenery in the country.

Scores

Each line score lists call sign, score, stations worked, multipliers, number of grids activated (if Rover), and bands (A= 50 MHz, B = 144 MHz, C = 222 MHz, D = 432 MHz, 9 = 902 MHz, E = 1296 MHz, F = 2304 MHz, G = 3456 MHz, H = 5760 MHz, I = 10 GHz, J = 24 GHz, K = 47 GHz, L = 75 GHz, M = 119 GHz, N = 142 GHz, O = 241 GHz, P = 300+ GHz). Section band win indicators are listed in boldface type.

1 Connecticut		KB2SAE (+N1ISB) 225 22 9 L ABCD		NS9E (+KB2MDM,N2HLT,N2HQW,N2JDO) 231,080 812 218 L ABCD		KU4IU 2,960 80 37 S AB	
KA1ZE	359,324 817 287 S	ABCD9EFGH		N2LSJ (+KE2BU,KB2PVZ,KB2SCI,AB2DS) 1,200 45 24 L ABD		KU4WWW 1,239 59 21 S B	
K1UHF	113,875 631 125 S	ABD		KC2EOS (AA2PV,KC2DYR,KC2EAL,KG4DZF,ops) 403 29 13 L ABD		WB4NIX 817 43 19 S AB	
K1FO	28,187 243 71 S	ABD				W4FRZ 12,540 164 60 Q ABCDE	
N1NQD	16,554 183 62 S	ABCD9E				N4ION (+K4WXX,KS4B) 11,460 155 60 L ABCD	
W3EP	10,035 223 45 S	A					
W1NWE	4,536 95 36 S	BCD					
K1WVX	3,230 73 34 S	ABCDE					
NT1N	2,890 85 34 S	AB					
K1KI	2,040 100 20 S	ABD					
W1AGTP	405 27 15 S	AB					
N1SFE	220 22 10 S	B					
KE1LE	78 13 6 S	AB					
K1ZE	6,536 101 43 Q	ABCDE					
W1QK (+AA1MY,K1XS,K1PHG,N1GS, N1ABY,W1QJ)	58,638 546 87 L	ABCD					
KB1H (+KB1DFB,N1XS)	10,530 222 45 L	ABD					
N1SAX (+KE1LI)	3,780 130 27 L	ABD					
Eastern Massachusetts		2 Eastern New York		3 Delaware		Georgia	
K5MA	75,922 487 119 S	ABCD		W3OR 73,416 336 138 S		ABCD9E	
W1PM	35,640 280 88 S	ABCDE		WA3BZT 3,509 121 29 S		KD4HLG 18,078 194 69 S	
W1GHZ	31,185 270 77 S	ABCD9E				KD4K 6,644 114 44 S	
N1GJ	12,155 151 55 S	ABCD9E				K4KAZ 4,859 87 43 S	
W1LKB	5,616 103 39 S	ABCDE				NY4F 546 35 13 S	
W1DYJ	3,317 107 31 S	AB				AD4J 297 23 11 S	
W1AENO	2,226 106 21 S	AB				K4SZ (+AE4GG) 5,192 90 44 M	
K1VJ	1,460 50 21 S	ABCD				K4HUM (W4GLC,KG4CFP,KE4SLO,KE4KQB, KF4HQZ,KD4HLV,ops) 9,200 146 50 L	
N1FDX	1,395 93 15 S	AB					
N1VQR	1,173 60 17 S	ABD					
W1OFR	800 34 20 S	ABD					
K1DAT	686 49 14 S	AB					
K1QM	240 20 12 S	AB					
W1XM (KB1DCA,KB1CGZ,W1GSL,KB1DQY, N1ZRN,KB9SDQ,ops)	26,460 324 63 M	ABCDE					
K1EKR (+KA1CLX)	12,852 157 51 L	BCDE					
K1SG (+AJ1E,N1DJB,K1MS,N1BNC)	11,327 200 47 L	ABCD					
N1OP (WB1GMA,K1BFD,W1A1E,ops)	7,308 147 42 L	ABD					
KA1ALT	1,938 102 19 L	AB					
Maine		NYC-Long Island		Eastern Pennsylvania		Kentucky	
W1XX	60,863 371 121 S	ABCD9E		W2VFI 3,111 135 17 S		K4TO 13,629 134 77 S	
N1RW	19,764 193 81 S	ABCD		N2MS 2,240 53 32 S		W4FVQ 6,250 81 50 S	
N1DGF	9,457 148 49 S	ABD		KC2DZB 1,581 75 17 S		NSJB/A 1,012 40 23 S	
W1REZ	1,984 62 32 S	B		W2KHQ 1,150 43 23 S			
K1WHS (+K1DY,K1TOL,N2CEI,WB2ONA,N1LBI, W1MRQ,+ logger)	365,781 940 249 M	ABCD9EFGHJ		KG2H 779 41 19 S			
New Hampshire		Northern New Jersey		North Carolina			
AF1T	51,813 324 101 S	ABCD9EFHI		K4QI 62,860 336 140 S		ABDE	
KU2A	47,000 310 100 S	ABCD9EF		W2YV 14,760 203 72 S		ABC	
K2HZN	11,115 172 57 S	ABD		W4VHH 14,129 115 71 S		BDEFI	
AC1J	9,845 136 55 S	ABCD		W4DEX 11,868 114 69 S		ABCDEFGI	
N1XQD	3,780 103 35 S	ABD		N4AJF 2,812 68 37 S		ABD	
N1JHU	1,755 54 27 S	ABCD		AA4ZZ (+K2SD,K4DX,W4WFF) 171,125 170 185 L		ABCD	
W1ZC	1,005 67 15 S	B		W4NH (K4EA,K4TW,KE4QL,KF4DZV,KI4M, KR4TG,N9KHC,NX4O,W4LTL,W4GFC, W4KXY,ops) 74,834 428 142 L		ABCD	
W1OA	741 39 19 S	AB					
Rhode Island		Northern New York		Maryland-DC		Northern Florida	
KM1X	18,786 253 62 S	ABD		K1RZ 223,450 711 205 S		ABCD9E	
KB9GZ	1,562 70 22 S	ABD		K3DNE 122,430 488 165 S		ABCD9E	
W1CPC	351 25 13 S	ABD		K3ZO 26,712 318 84 S		AB	
Vermont		South New Jersey		K3HCE 18,200 212 70 S		ABD	
KG1M	19,750 180 79 S	ABCD9E		N3II 11,664 216 54 S		AB	
W1AIM	19,210 174 85 S	ABCD		N3KNI 7,191 112 51 S		ABD	
K1LPS	8,400 122 56 S	ABCD		KA3TCC 6,210 114 45 S		ABCD	
KT1VT	4,042 94 43 S	AB		N3ZTZ 4,719 142 33 S		ABD	
N1JIF (+W1ECT,KD1P,K1AUA,G) W1MRQ,+ logger)	2,860 97 26 M	ABCD		K3ROJ 2,366 82 26 S		ABD	
W1JGQR (W1SJ,N1ZUK,ops)	121,032 793 123 L	ABCD		W6AXX 2,200 100 22 S		B	
Western Massachusetts		Western New York		N3VOP 1,092 45 21 S		ABD	
W1MBA	28,454 170 82 S	BD9EFGHI		W4APRR 1,026 46 19 S		ABD	
N1MHU	10,368 168 48 S	ABCD		N3CDA 7,222 37 19 S		ABD	
N1MJA	5,766 186 31 S	A		W3GN 558 31 18 S		AB	
N1FHS	4,150 131 25 S	ABD		KF3DC 507 39 13 S		AB	
N1RSY	560 40 14 S	B		N2TDT 324 36 9 S		AB	
W2SZ1 (K1DH,K1EP,K1M,K2AD,K2TR,K2JJB, KB2WJO,N1XS,N2BN,N2HPA,N2XRE,N2YCA N2YZO,W1SZ,W1VE,W2ARQ,W1ZMS, W2AAU,W2ASP,W48UA,W2SB,W2RZ,ops) 1,418,436 2098 369 M	ABCD9EFGHIJKL			K3RKD 100 20 5 S		B	
NC1I (+K1CX,K1QFE,N1DPM,N1MUW,NC1B, W1QA,W21V) 286,029 1234 183 L	ABCD			W3IP (+KF3FT,W3ATID,WG3R,W3N3L,K3MLA) 102,661 535 149 L		ABCD	
				Western Pennsylvania		5 Arkansas	
				AA3GM 4,370 65 46 S		ABCD9E	
				W3HDH 720 40 18 S		A	
				W3KJM 253 23 11 S		A	
				WB0WVG 77 11 7 Q		AB	
				W3YOZ (WR3Z,K4VV,KA3EJ,WJX3B,ops) 39,022 237 109 L		ABCD	
				K3MJW (KA3JWJ,KA3WSW,N3NOS,ops) 2,584 53 38 L		ABD	
				4 Alabama		Louisiana	
				W4ZRZ 21,725 207 79 S		ABCD9E	
				N4IZ 3,432 72 33 S		ABCDE	
						NS5YH 7,620 109 60 S	
						W5JRT 2,800 70 35 S	
						K5MTR 738 38 18 S	
						K5JRY 324 24 12 S	
						W5AKB 322 23 14 S	
						K5CZD 312 23 12 S	

Mississippi
N5YLS 2,516 55 37 S ABCD
KJ5RC 540 27 20 S AB

New Mexico
NSXZM 2,262 63 26 S ABCDE
NKUW 874 40 19 S ABD

North Texas
W8CM 58,000 343 116 S ABCDE
K9MK 10,788 121 62 S ABCDE

Oklahoma
W5VHF (K5SW,ops) 5,148 79 52 S ABCDE
K5HP 672 30 21 S ABD

South Texas
K5IUA 86,426 382 158 S ABCD9EF
W3XO/5 37,584 242 116 S ABCD9E

West Texas
N5XYO 425 25 17 S AB
KK5IH (+KK5KK) 11,242 110 77 M ABCDE

East Bay
W6OMF 19,338 202 66 S ABCDE
KF6GM 14,350 215 50 S ABCDE

Los Angeles
W6GGV 20,178 227 59 S ABCDE
KE6FCT 16,802 209 62 S ABCD

Orange
N6HKF 52,407 440 81 S ABCDE
K6TSK 36,281 338 73 S ABCDE

Santa Barbara
N6PI 4,266 102 27 S ABCD9E
KC6NBI 429 29 13 S ABD

Pacific
NH6YK 767 47 13 S ABD

Santa Clara Valley
W6GVD 7,200 164 32 S ABCDE
K7KX 2,490 83 30 S AB

Santa Clara Valley
N6JET 15,158 210 53 S ABCDE
W6GYD 7,200 164 32 S ABCDE

Santa Clara Valley
N6JET 15,158 210 53 S ABCDE
W6GYD 7,200 164 32 S ABCDE

Santa Clara Valley
N9VM 51,450 335 98 S ABCD9E
N9STU 37,736 275 89 S ABCDEIP

Santa Clara Valley
N9VM 51,450 335 98 S ABCD9E
N9STU 37,736 275 89 S ABCDEIP

KD6IYL 340 27 10 S BD
KF6GNV 296 37 8 S B
WA6QYR 128 16 8 S B

Sacramento Valley
WB6NTL 36,450 305 81 S ABCDE
N6KXB 28,934 255 74 S ABCDE

Arizona
KE7NR 2,871 76 29 S ABCDE
WB7OHF 363 28 11 S ABCD

Eastern Washington
K7CVNA 1,518 57 23 S ABD
W7JHS 980 39 20 S ABD

Idaho
N7EIJ 4,743 87 51 S ABD
WA6KLK 2,772 58 42 S ABD

Nevada
K7ICW 5,085 87 45 S ABCDE
K06CX 150 15 10 S AB

Oregon
K7HBJ 546 32 13 S ABCDE
N7DB 494 31 13 S ABCD

Utah
N7JA 2,808 69 27 S ABCD9E
KJ7FK 552 35 12 S ABD

Western Washington
KE7SW 26,838 223 71 S ABCD9EFGH
W3JPT 2,052 97 19 S ABD

Michigan
K2YAZ 132,396 422 204 S ABCD9EFGH
K8MD 68,016 344 156 S ABCD9E

Ohio
WA8WZG 388,144 788 272 S ABCD9EFGHI
K8FD 117,000 383 195 S ABCD9EF

Ohio
K8BBO 23,320 224 88 S ABD
K8BKD 17,302 180 82 S ABD

Ohio
N8ZLV 2,475 75 33 S AB
K8C8DR 144 28 4 S ABD

Ohio
N8LGP 615 41 15 Q B
N8ZM (+N8IDS,KD8FO,KB8ZR) 20,995 201 85 L ABCD

West Virginia
K2UOP/8 89,376 393 147 S ABCD9EF
N8XUR 36,642 261 93 S ABCD9E

Illinois
N2BJ 134,720 580 160 S ABCD9E
WB9Z 61,312 395 128 S ABD

Illinois
N9WV 11,280 165 60 S ABCD
WA6TMJ 7,155 140 45 S ABD

Wisconsin
W9GA 103,016 459 158 S ABCD9E
K9KL 40,284 274 108 S ABCDE

Wisconsin
W9GA 103,016 459 158 S ABCD9E
K9KL 40,284 274 108 S ABCDE

Wisconsin
W9GA 103,016 459 158 S ABCD9E
K9KL 40,284 274 108 S ABCDE

Wisconsin
W9GA 103,016 459 158 S ABCD9E
K9KL 40,284 274 108 S ABCDE

Wisconsin
W9GA 103,016 459 158 S ABCD9E
K9KL 40,284 274 108 S ABCDE

Wisconsin
W9GA 103,016 459 158 S ABCD9E
K9KL 40,284 274 108 S ABCDE

Wisconsin
W9GA 103,016 459 158 S ABCD9E
K9KL 40,284 274 108 S ABCDE

Wisconsin
W9GA 103,016 459 158 S ABCD9E
K9KL 40,284 274 108 S ABCDE

Wisconsin
W9GA 103,016 459 158 S ABCD9E
K9KL 40,284 274 108 S ABCDE

Wisconsin
W9GA 103,016 459 158 S ABCD9E
K9KL 40,284 274 108 S ABCDE

Wisconsin
W9GA 103,016 459 158 S ABCD9E
K9KL 40,284 274 108 S ABCDE

Wisconsin
W9GA 103,016 459 158 S ABCD9E
K9KL 40,284 274 108 S ABCDE

Wisconsin
W9GA 103,016 459 158 S ABCD9E
K9KL 40,284 274 108 S ABCDE

Wisconsin
W9GA 103,016 459 158 S ABCD9E
K9KL 40,284 274 108 S ABCDE

Wisconsin
W9GA 103,016 459 158 S ABCD9E
K9KL 40,284 274 108 S ABCDE

Wisconsin
W9GA 103,016 459 158 S ABCD9E
K9KL 40,284 274 108 S ABCDE

Wisconsin
W9GA 103,016 459 158 S ABCD9E
K9KL 40,284 274 108 S ABCDE

Wisconsin
W9GA 103,016 459 158 S ABCD9E
K9KL 40,284 274 108 S ABCDE

Wisconsin
W9GA 103,016 459 158 S ABCD9E
K9KL 40,284 274 108 S ABCDE

VA3AEC 1,633 52 23 S ABCD
VE3VHB 825 33 25 S B

Manitoba
VE4KQ 2,400 43 32 S ABCD9E

British Columbia
VE7SKA 4,032 106 36 S ABD
VE7HHS 720 29 18 S ABD

Argentina
LU6DRV 390 30 13 S A

Rovers Atlantic
W2FU (+K2CS) 220,176 745,176 7 ABCD9EFGHI
K2OEQ 840 31 24 R 4 ABD

Central
WB9SNR 103,240 495,106 10 ABCD9EFGHI
N8KWX (+K9NA) 64,952 585 81 R 8 ABCD

Dakota
W9FZ 26,523 270 63 R 10 ABCD9EF
KF0UK 18,200 208 56 R 7 ABCD9E

Delta
N4OFA (+K5OGF) 29,862 290 79 5 ABCDE
N5ASA 1,200 49 24 R 2 ABD

Great Lakes
K8WW 55,528 402 88 R 6 ABCD9E
N8BI 15,470 135 65 R 10 ABCDFGHJK

Hudson
N2GKM (+K2EBH) 24,409 230 77 R 15 ABCD
N2MH 15,785 203 55 R 8 ABCD

Midwest
N0LNO 3,201 62 33 R 7 ABCDE
KB0QGT 2,240 70 32 R 7 AB

New England
N1MJD (+N1JEZ) 143,256 747,127 14 ABCD9EF
WA2ID 26,448 273 57 R 6 ABCD9EFGHIJ

New England
N1MJD (+N1JEZ) 143,256 747,127 14 ABCD9EF
WA2ID 26,448 273 57 R 6 ABCD9EFGHIJ

New England
N1MJD (+N1JEZ) 143,256 747,127 14 ABCD9EF
WA2ID 26,448 273 57 R 6 ABCD9EFGHIJ

New England
N1MJD (+N1JEZ) 143,256 747,127 14 ABCD9EF
WA2ID 26,448 273 57 R 6 ABCD9EFGHIJ

New England
N1MJD (+N1JEZ) 143,256 747,127 14 ABCD9EF
WA2ID 26,448 273 57 R 6 ABCD9EFGHIJ

New England
N1MJD (+N1JEZ) 143,256 747,127 14 ABCD9EF
WA2ID 26,448 273 57 R 6 ABCD9EFGHIJ

New England
N1MJD (+N1JEZ) 143,256 747,127 14 ABCD9EF
WA2ID 26,448 273 57 R 6 ABCD9EFGHIJ

New England
N1MJD (+N1JEZ) 143,256 747,127 14 ABCD9EF
WA2ID 26,448 273 57 R 6 ABCD9EFGHIJ

New England
N1MJD (+N1JEZ) 143,256 747,127 14 ABCD9EF
WA2ID 26,448 273 57 R 6 ABCD9EFGHIJ

New England
N1MJD (+N1JEZ) 143,256 747,127 14 ABCD9EF
WA2ID 26,448 273 57 R 6 ABCD9EFGHIJ

New England
N1MJD (+N1JEZ) 143,256 747,127 14 ABCD9EF
WA2ID 26,448 273 57 R 6 ABCD9EFGHIJ

New England
N1MJD (+N1JEZ) 143,256 747,127 14 ABCD9EF
WA2ID 26,448 273 57 R 6 ABCD9EFGHIJ

New England
N1MJD (+N1JEZ) 143,256 747,127 14 ABCD9EF
WA2ID 26,448 273 57 R 6 ABCD9EFGHIJ

New England
N1MJD (+N1JEZ) 143,256 747,127 14 ABCD9EF
WA2ID 26,448 273 57 R 6 ABCD9EFGHIJ

New England
N1MJD (+N1JEZ) 143,256 747,127 14 ABCD9EF
WA2ID 26,448 273 57 R 6 ABCD9EFGHIJ

New England
N1MJD (+N1JEZ) 143,256 747,127 14 ABCD9EF
WA2ID 26,448 273 57 R 6 ABCD9EFGHIJ

New England
N1MJD (+N1JEZ) 143,256 747,127 14 ABCD9EF
WA2ID 26,448 273 57 R 6 ABCD9EFGHIJ

New England
N1MJD (+N1JEZ) 143,256 747,127 14 ABCD9EF
WA2ID 26,448 273 57 R 6 ABCD9EFGHIJ

New England
N1MJD (+N1JEZ) 143,256 747,127 14 ABCD9EF
WA2ID 26,448 273 57 R 6 ABCD9EFGHIJ

