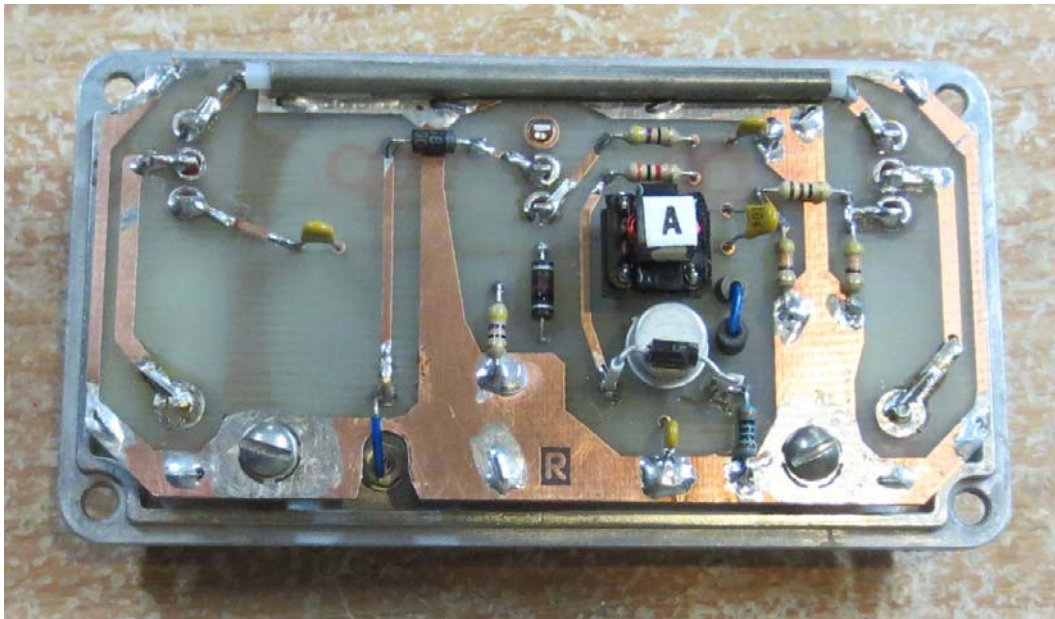


Experiments with a Broadband, High-Dynamic Range, Low Noise HF Receiver Preamplifier

Scott Roleson, KC7CJ, 14938 Amso Street, Poway, CA 92064; kc7cj@arrl.net

Details of the PCB.

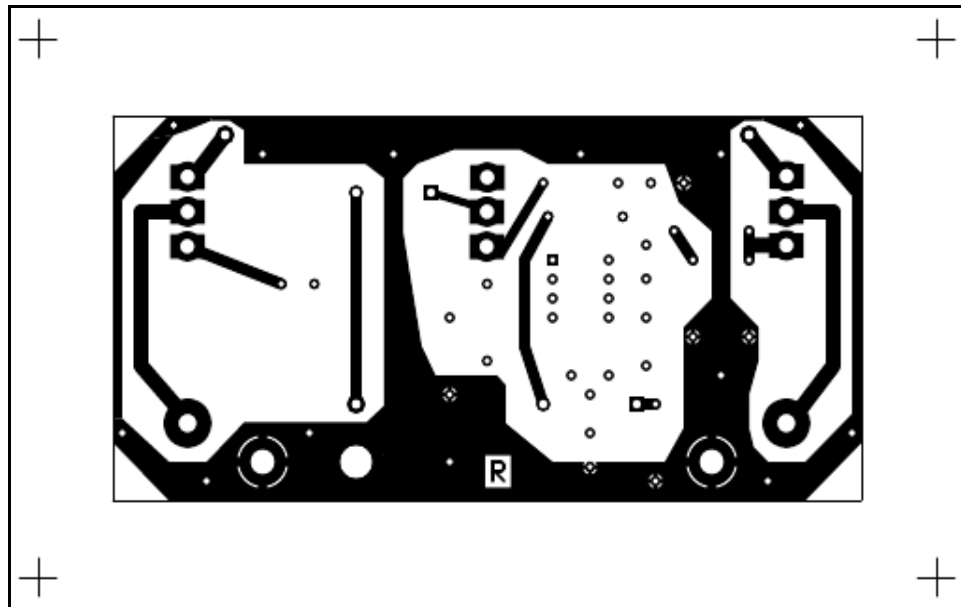


PCB assembly is mounted on enclosure lid. Diode CR2 and transistor Q1 are thermally bonded.

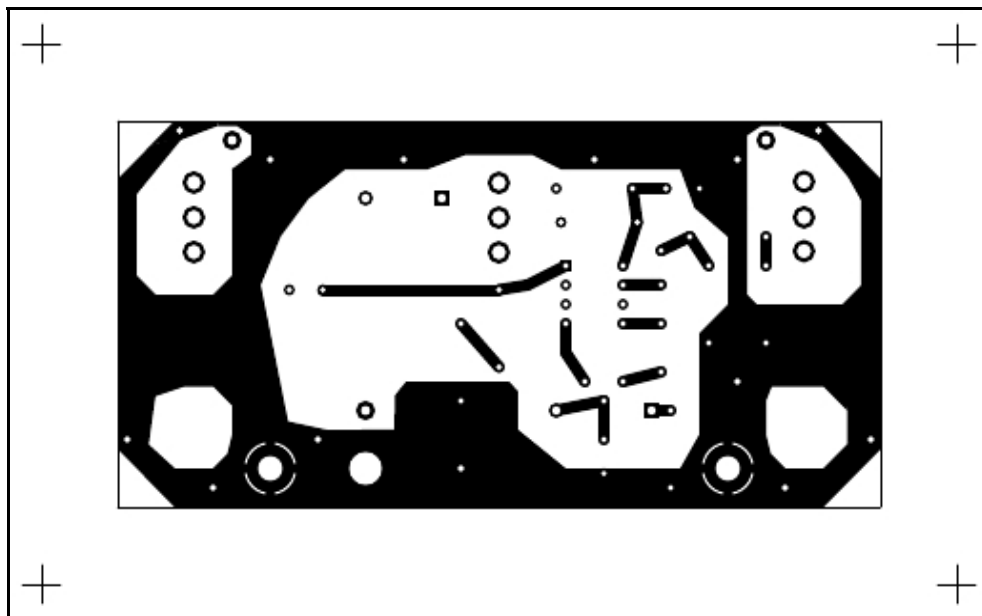


External view of completed amplifier with switch linking bar in place.

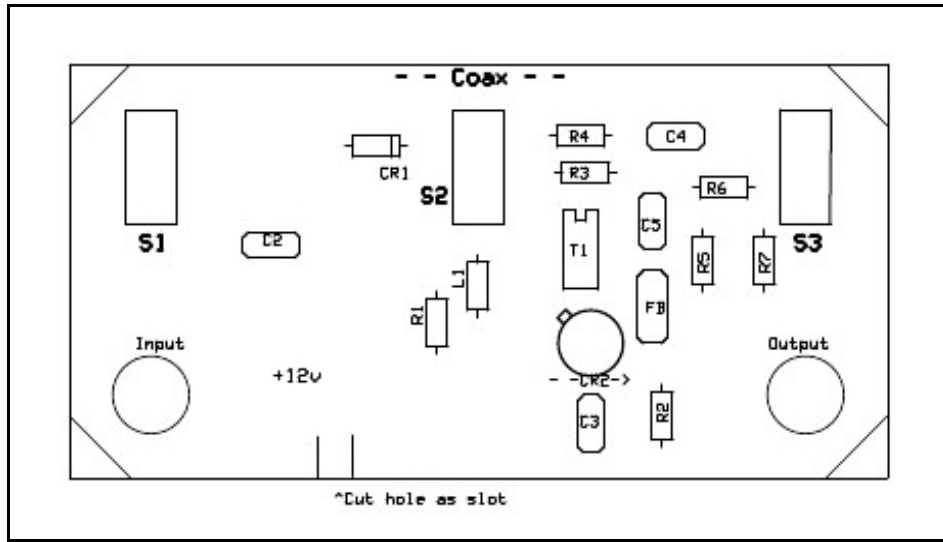
PCB top layer.



PCB bottom layer (inverted or top view)



PCB component placement



PCB hole drill drawing

